
ECONtribute
Discussion Paper No. 158

**Political Activists as Free-Riders: Evidence
from a Natural Field Experiment**

Anselm Hager
Johannes Hermlé

Lukas Hensel
Christopher Roth

April 2022

www.econtribute.de



Political Activists as Free-Riders: Evidence from a Natural Field Experiment*

Anselm Hager

Lukas Hensel

Johannes Hermle

Christopher Roth

April 1, 2022

Abstract

How does a citizen's decision to participate in political activism depend on the participation of others? We conduct a nation-wide natural field experiment in collaboration with a major European party during a recent national election. In a party survey, we randomly provide canvassers with true information about the canvassing intentions of their peers. When learning that more peers participate in canvassing than previously believed, canvassers significantly reduce both their canvassing intentions and behavior. An additional survey among party supporters underscores the importance of free-riding motives and reveals that there is strong heterogeneity in motives underlying supporters' behavioral responses.

Keywords: Political activism, natural field experiment, strategic behavior, beliefs, motives

JEL Classification: D8, P16

*Anselm Hager, Humboldt University, anselm.hager@gmail.com; Lukas Hensel, Guanghua School of Management, lukas.hensel@gsm.pku.edu.cn; Johannes Hermle, University of California, Berkeley and IZA, j.hermle@berkeley.edu; Christopher Roth, University of Cologne, ECONtribute, briq, CESifo, Cage, roth@wiso.uni-koeln.de. All authors contributed equally. For helpful comments, we thank Johannes Abeler, Ned Augenblick, Eric Avis, Lukas Balafoutas, Ernesto Dal Bo, Davide Cantoni, Stefano Caria, Stefano DellaVigna, Dominik Duell, Christine Exley, Claudio Ferraz, Fred Finan, Simon Gächter, Nicola Gennaioli, Thomas Graeber, Don Green, Michael Kosfeld, Alexander Haas, Macartan Humphreys, Ulrike Malmendier, Michel Marechal, Suresh Naidu, Muriel Niederle, Ricardo Perez-Truglia, Thorsten Persson, Gautam Rao, Andreas Stegmann, Leah Shiferaw, David Yang, Noam Yuchtman, and Florian Zimmermann and seminar audiences at the University of California Berkeley, WZB Berlin, the Institute on Behavior and Inequality in Bonn, University of Cologne, EUI Florence, University of Konstanz, King's College London, University of Innsbruck, University of Oxford, University of Tilburg, University of Zurich, the Demand for Democracy conference in Munich, and the 2018 ECBE conference in Bergen. We thank Johanna Porten for excellent research assistance. The data collections for this paper were pre-registered at the AEA RCT Registry following this link: <https://www.socialscienceregistry.org/trials/2358> and on AsPredicted (#90051) following this link: https://aspredicted.org/T3Z_SR2. The research described in this article was approved by the University of Oxford Department of Economics Research Ethics Committee, Ref No: R52651/RE004, and by the Institutional Review Board of Guanghua School of Management, Peking University (#2022-04). Roth acknowledges funding by the Deutsche Forschungsgemeinschaft (DFG, German Research Foundation) under Germany's Excellence Strategy – EXC 2126/1-390838866.

1 Introduction

Democracies rely on the efforts of political activists who participate in political campaigns. In the pursuit of improving collective outcomes, however, the individual action of an activist is unlikely to accomplish change. Instead, the impact of political activists hinges on the joint effort of the group, creating a situation of strategic interdependence where the effort of an activist might depend on the effort of her peers. Such strategic interdependence of individuals' actions is at the core of the collective action problem of political activism (Hardin, 2015; Olson, 1965). This paper presents a natural field experiment to investigate how the effort of a political activist depends on her belief about the participation of others.

In canonical models, political activism is viewed as a public goods game with incentives to free-ride (Olson, 1965): activists are motivated instrumentally, trading off private benefits against private costs of contributing. This class of models postulates that political activists reduce their effort when fellow activists contribute more to the public good. Or, put differently, the effort choices of activists are strategic substitutes.

In contrast, a large literature argues that participation in collective action is not mainly driven by instrumental concerns but instead by social motives leading to conditional cooperation (Falk and Fischbacher, 2006; Ostrom, 2000; Uhlener, 1989). If such motives outweigh instrumental considerations, activists augment their effort in response to an increase in effort by their peers. Hence, activists' effort choices will exhibit strategic complementarity. Understanding the strategic nature of political activism is crucial to the refinement of the theoretical assumptions of models of collective action.

This paper presents the results of a natural field experiment to causally examine the strategic nature of political activism. In cooperation with a major political party in a Western European country, we implemented a pre-registered field experiment in the context of a large door-to-door canvassing campaign in the run-up to a nationwide general election. We examine whether and how party supporters' canvassing efforts depend on their beliefs about the canvassing efforts of their fellow party supporters. We focus on

canvassing as it is an important form of political activism that directly influences political outcomes (Pons, 2018) and requires substantial time commitments from the activists.

Identifying the causal link between beliefs and behavior from correlational data faces the common challenges of causal inference. First, canvassers' effort choices might directly affect their beliefs, thereby giving rise to reverse causality. Second, active canvassers might hold systematically different beliefs relative to non-canvassers, potentially inducing omitted variable bias. In correlational data, these confounds could spuriously suggest either strategic substitutability or complementarity.

Our experimental strategy circumvents these confounds by exogenously manipulating beliefs in a natural field setting. Our design proceeds as follows. We use an unobtrusive survey distributed by the party via email eight weeks before the election with the stated purpose of gathering information to organize the campaign. In this survey, we first measure party supporters' ex-ante beliefs about the door-to-door canvassing intentions of their fellow party supporters. We then exogenously shift these beliefs in a treatment group by providing true information collected through a different survey conducted one month prior to the experiment. Supporters in a control group receive no such information. Subsequently, we elicit respondents' post-treatment beliefs about the actual canvassing turnout of their fellow party supporters. Finally, we elicit respondents' intentions to go canvassing. After the survey, we collect unique, unobtrusive real-time data on canvassing behavior through a novel canvassing smartphone application in which door-to-door canvassers register the addresses they visit. To preserve the natural field setting we ensured that participants are at no point aware of their participation in an experiment.

We present four key results on the form, strength, and heterogeneity in the strategic interdependence of political activists' effort choices. First, on average, political activists' intentions follow the predictions of a public goods game with free-riding incentives: party supporters who learn that their peers plan to exert more effort than they previously expected significantly lower their intentions to participate in the party's campaign. The response is concentrated along the intensive margin. Supporters plan to canvass 1.04

days (*s.e.* = 0.37) less relative to a control mean of 4.03 days.

Second, we demonstrate that the reduction in canvassing intentions translates into a reduction in actual canvassing behavior. Using real-time canvassing data collected through the party's smartphone application, we estimate a reduction of 13.39 (*s.e.* = 6.89) canvassed doors, which is equivalent to a reduction of 38% relative to the control group mean of 35.33. Furthermore, we find a statistically significant reduction of 0.097 (*s.e.* = 0.042) standard deviations in a pre-specified index combining canvassing intentions and behavior. Our results thus imply that political activists' behavior exhibits strategic substitutability *on average*.

Third, the effects are driven by party supporters with weaker social ties to the party (as proxied by prior canvassing experience, whether the respondent is a party member, and party membership duration). On the contrary, party supporters with strong ties do not exhibit a systematic pattern of strategic substitutability. Similarly, we only find evidence for strategic substitutability effects in localities with relatively weak social cohesion within the local party chapter. These results highlight that social connections can counterbalance free-rider incentives and act as a force for strategic complementarity.

Fourth, we conduct an additional survey among party supporters to dissect the mechanisms underlying strategic interactions in political action. We ask party supporters how they would adjust their campaign efforts in response to learning about higher effort of their peers. We then ask them to describe the reasoning underlying their decision with both an open-ended response as well as structured response items. Our data corroborates the importance of free-riding motives as a very prevalent motive, and allows us to distinguish between different social motives: it reveals that concerns related to social identity and enjoyment value are the most prevalent motives shown by activists who exhibit complementarity in their effort choices.

Our study contributes to a growing body of literature examining whether and how social interactions and beliefs affect political behavior such as protest participation (Bursztyn et al., 2021; Cantoni et al., 2017; Enikolopov et al., 2020; González, 2020; Manacorda and Tesei, 2020; McClendon, 2014; Passarelli and Tabellini, 2017), voting (Gerber et al.,

2020, 2008, 2011; Green et al., 2013; Kendall et al., 2014), and campaign behavior more generally (Neuenschwander and Foos, 2021). The three studies most related to this work are Cantoni et al. (2019) who use a similar experimental design to examine university students' protest participation in Hong Kong. Hager et al. (2022) study how strategic interactions of protesters in Germany vary across the political spectrum. Finally, Perez-Truglia and Cruces (2017) study the impact of information about campaign donations of neighbors on donation behavior in the US. We make several contributions to this literature.

First, our experimental data is distinct in two main respects: we draw on a unique combination of survey and behavioral outcome data collected through a smartphone application. This feature of the data allows us to study treatment effects on both self-stated intentions and actual behavior. Moreover, we provide evidence from a natural field experiment on behalf of the party, in which participants are not aware of their participation in an experiment.

Second, we study an electoral campaign in a liberal democracy where it is ex-ante unclear whether social motives are sufficiently strong to outweigh free-riding incentives. On the one hand, a typical public good logic applies to our setting. What matters for electoral success is the total number of convinced voters. As a result, individual effort can be easily substituted by the effort of others. On the other hand, social motives could play an important role in our context as party supporters often form strong social ties. Indeed, campaign organizers within the party assumed strategic complementarity of effort choices. As a result, they tried to motivate their supporters by highlighting high levels of canvassing participation through e-mail notifications like "Everybody goes from door to door! Participate as well!". Our evidence indicates that this perception of complementarity might be wrong which has important implications for parties' mobilization strategies.

Third, in contrast to samples used in the previous literature, we leverage a heterogeneous sample of party supporters of all ages and with diverse backgrounds. The heterogeneity in our sample allows us to shed light on underlying drivers and mechanisms of

our treatment effects. In particular, the heterogeneity in our data provides important evidence that strategic substitutability is most pronounced for party supporters with weak social ties to the party. These patterns are also supported by individual-level data on motives underlying the effort adjustments in response to increases in peer effort.

Our findings also inform the theoretical literature investigating political behavior in democratic systems (Coate and Conlin, 2004; Downs, 1957; Feddersen and Sandroni, 2006; Palfrey and Rosenthal, 1984; Shadmehr, 2021; Shadmehr and Bernhardt, 2011). Our results provide evidence in line with the classical free-rider assumption in models of collective action (Olson, 1965). However, the systematic heterogeneity in the responsiveness to our treatment underscores that this assumption does not apply uniformly across the population. Instead, our findings highlight that theoretical models of political behavior have to account for heterogeneity in agents' motivation.

2 Experimental Design

2.1 Design and Sample

Setting: Our field experiment took place in the run-up to a recent general election in a Western European country. The experiment was implemented in collaboration with a major political party to study party supporters' motivation and actual participation in the party's door-to-door canvassing campaign. The analysis was pre-registered at the AEA RCT registry before the start of the data collection. The experimental manipulation was administered in an online pre-campaign survey sent out on behalf of the party roughly eight weeks before the election. After the intervention, we tracked party supporters' real canvassing efforts throughout the campaign until the election.

The electoral system in our context is mostly proportional with no absolute majority realistically achievable for any party. Hence, each additional vote gained can be thought of as increasing the party's political power in a more or less continuous way.

The party with which we cooperated strongly promoted canvassing as a campaign-

ing tool through internal communication channels. All canvassing volunteers were instructed to record every canvassed door in a novel smartphone application as a way to help the party organize its current and future campaigns. The data from the application provides unique behavioral outcomes on actual, real-time canvassing efforts.

While the overall level of canvassing activity was higher than in previous elections, there was still substantial potential to increase activity levels. Nationally, volunteers of the party reached out to 1.65% of all households. At the constituency level, the fraction of households canvassed ranged between 0 and 25% with a median of 0.5% and a 90th percentile of 4.5%. These low absolute levels of canvassing in most places imply that there was scope for volunteers to increase their level of canvassing activity even though that could imply going to less promising areas and thus lower returns to canvassing activity.

Sampling and Procedures: Our original sample comprises all party supporters who had signed up to the party’s campaign email list about eight weeks before the election. At the beginning of the electoral campaign, we contacted these supporters with an email invitation on behalf of the party. The email asked supporters to participate in the survey to help organize the campaign. The invitation email was designed by the party to preserve the natural environment and ensure that participants would not be aware of being part of an experiment. A reminder email was sent ten days later. In total 1,411 party supporters responded to the online survey for this experiment.¹ Random assignment and experimental manipulation took place within the online survey.

Measuring and Manipulating Beliefs: We designed the experiment to provide causal evidence on how party supporters’ motivation and actual canvassing effort depend on their beliefs about the efforts of their peers.

¹We simultaneously conducted a second experiment with a separate subsample of activists which is pre-registered in the same pre-analysis plan used for this paper. Supporters responding to the invite were randomly allocated between the experiment described in this paper and the experiment described in Hager et al. (2021) which studies how beliefs about the effort choices of members of the main competing political party affect activists’ effort choices. Each individual only took part in one experiment.

The experimental design is illustrated in Figure A1. In a first step, we elicit participants' pre-treatment beliefs about the share of party members who *plan* to go canvassing. Then, half of all respondents are randomly assigned to receive information about the canvassing plans of fellow party members (treatment group), whereas the remaining half receives no information (control group). More specifically, participants in the treatment group are truthfully informed that 37% of party members in a previous survey had stated an intention to go canvassing.² After the experimental manipulation, all respondents are asked to estimate the share of members who will *actually* go canvassing. The elicitation of participants' post-treatment beliefs allows us to check whether the information provision successfully shifts beliefs.

Outcome Measures: We study the canvassing effort of party supporters in the campaign by combining both survey and behavioral outcome data. We use two pre-specified self-reported measures of canvassing intentions that are collected after the treatment administration: First, we measure whether a respondent intends to do any canvassing in the campaign. This allows us to shed light on movement along the extensive margin. Second, we elicit respondents' intended number of days of participation, enabling us to analyze responsiveness to the treatment along the intensive margin.³

We then assess whether changes in canvassing intentions translate into changes in canvassing behavior. We draw on unique behavioral outcome data from the smartphone application distributed by the party. The party continuously emphasized the importance of using the application to volunteers citing the need for data to plan current and future campaign activities. The application allows us to assess three pre-specified behavioral outcomes: first, an indicator for whether a supporter knocks on any doors; second, the number of doors a supporter knocks on; and third, the number of days a supporter goes

²We collected this data in a separate survey with another sample of party members contacted through official channels three weeks before the experiment. In this survey, we first elicited respondents' party affiliation and then asked the following question: *Do you plan to engage in canvassing on behalf of your party during this electoral campaign?*. Through this survey, we did not get sufficient respondents to provide reliable estimates of constituency-level canvassing intentions. Hence, we provided only information about the national level.

³The intended number of days for respondents who do not plan to canvass is coded as zero days.

canvassing.⁴

2.2 Descriptives and Balance

Table A1 describes the sample characteristics elicited in the survey. 24% of supporters are women, and the average age is 41 years. The gender composition of our sample is comparable to the population of party members but supporters are significantly younger than the average party member.⁵ 83% of supporters are party members with an average membership duration of 12 years. Besides basic socio-demographic information, the survey also inquires about supporters' prior canvassing experience. 38% of participants had helped in a past campaign.

Regarding our outcome variables, 49% of supporters intend to participate in door-to-door canvassing with an average of 3.85 intended days. Turning to behavioral outcomes from the app, we observe much lower actual canvassing activity relative to stated canvassing intentions: 12% of party supporters in our sample actually participate in the campaign. The respondents canvass on average 0.59 days and knock on 29 doors. The unique link between the survey and the behavioral outcome data from the natural field setting also allows us to study how intentions and actual canvassing behavior are related. We find a sizable positive correlation between intended days and the actual number of days of canvassing ($\rho = 0.28$, visualized in Figure A2). Similarly, we find that people's intention to do any canvassing is significantly related to whether they actually canvass ($\rho = 0.33$). This makes our sample disproportionately engaged. The sample can thus best be characterized as 'young and highly motivated supporters.' The young age in our sample also implies that supporters did not face technological barriers to using the smartphone application with which the party organized its canvassing and which we used to obtain unobtrusive behavioral outcomes. Our study includes 6.5% of all party supporters who canvassed for the party during the entire campaign. Furthermore, our survey respon-

⁴Individuals who do not appear in the application data are coded as not having canvassed.

⁵This difference is possibly the result of the party's centralized mobilization effort which relied on online technology geared towards younger supporters.

dents were responsible for 11% of all knocked doors during the campaign.

Finally, we do not observe significant differences between the treatment and control group for any of the covariates (Table A2). We regress the treatment indicator on all covariates to test for joint significance. The p-value of this joint F-test is 0.55, indicating that the randomization produces two highly comparable groups.

3 Belief Updating

Before turning to the analysis of treatment effects on canvassing outcomes, we test for the successful manipulation of beliefs about peer canvassing effort.

Pre-treatment Beliefs: Panel A of Figure 1 plots the distribution of pre-treatment beliefs about the percentage of party members who intend to go canvassing. The vertical line corresponds to the treatment information which indicates that 37% of party members intend to go canvassing. We observe that the distribution is highly right-skewed with a median belief of 10% of party members planning to go canvassing. Relative to the treatment information, 82% of participants underestimate their peers' canvassing intentions.

Belief Updating: The key qualification of our experimental design is that participants update their post-treatment beliefs about actual participation after receiving the treatment information. In particular, we expect underestimators to increase their post-treatment belief about the fraction of fellow party members who actually go canvassing. Vice versa, we expect overestimators to decrease their post-treatment beliefs.

Panel B of Figure 1 shows the non-parametric relationship between pre-treatment beliefs about intentions and post-treatment beliefs about actual participation by treatment status. We see that underestimators in the treatment group have higher post-treatment beliefs than control group underestimators (by, on average, 55% of the control group mean or 5 percentage points; $p < 0.01$, see column 1 of Table A14). The reverse is true

for overestimators. Treated overestimators update more negatively compared to overestimators in the control group (they see a decrease of 38% of the control group mean or 17 percentage points; $p < 0.01$, see column 1 of Table A20). Because the number of overestimators is much greater than the number of underestimators, the average treatment effect across under- and overestimators on post-treatment beliefs is 1.2 percentage points ($p < 0.05$, column 1, Panel A of Table 1). We conclude that the information provision successfully shifted participants’ beliefs about the canvassing effort of their peers.

4 Results

4.1 Empirical Specification

Do these exogenous changes in beliefs affect party supporters’ motivation and actual behavior in the campaign? In Appendix Section A, we outline a theoretical model of activists’ strategic behavior. In particular, our model predicts that classical free-riding behavior should take place if instrumental motives, on average, dominate the effect of social motives. Whether this prediction holds is ultimately an empirical question that we tackle in this section.

In our analysis we focus on the pooled analysis of under- and overestimators.⁶ We estimate the following specification using ordinary least squares:

$$Y_i = \beta_0 + \beta_1 T_i + \zeta^T \mathbf{X}_i + \varepsilon_i \tag{1}$$

where Y_i is the outcome variable of interest. T_i is a dummy variable taking a value of one for people who receive the treatment information and zero otherwise.⁷ \mathbf{X}_i is a set of pre-

⁶We present heterogeneous results for participants who under- and overestimate the share of fellow party members who plan to go canvassing in Online Appendix Tables A14 to A25.

⁷We also report the results of a pooled regression with the treatment variable taking the value 1 for treated underestimators, -1 for treated overestimators and 0 for respondents in the control group in Table A5. The results of this specification are qualitatively similar to the results for the pooled specification with the binary treatment indicator.

specified control variables: party membership, number of years of party membership, age, sex, whether a participant has already participated in a canvassing training, whether a participant has already downloaded the online application, whether a participant has participated in canvassing before this federal election, and whether a participant has participated in canvassing for this federal election.⁸ To account for multiple comparisons, we also examine the effects on a pre-specified index as a joint measure of all five self-reported survey measures and behavioral outcomes jointly.⁹ The key coefficient is β_1 which captures the strategic interaction between one's own and peer effort.

4.2 Main Results

Panel A of Table 1 presents the main results. Participants who are informed that fellow party members devote more effort than previously thought, on average, reduce their willingness to participate in the party's campaign. Participants intend to canvass 1 day (*s.e.* = 0.37) less after receiving the treatment information, which is equivalent to a reduction of 24% relative to the control group mean of 4.4 days. There is, however, no significant effect on the dummy for the intention to engage in any canvassing, with a point estimate close to zero (-0.012, *s.e.* = 0.023).

Does lower *intended* canvassing translate into lower *actual* canvassing? Considering canvassing effort, we again find a significant reduction of 13.39 canvassed doors (*s.e.* = 6.90). This is equivalent to a 38% reduction relative to the control group mean of 35.33 doors. Similarly, the point estimate on the impact on actual days canvassed indicates a reduction of 0.15 canvassed days (*s.e.* = 0.14), corresponding to a sizable, yet not statistically significant 22% reduction relative to the control group mean.¹⁰ In line with

⁸Excluding control variables leads to similar results (Online Appendix Tables A26 to A31).

⁹The index takes into account (i) an indicator for whether a participant plans to go canvassing, (ii) the number of days that a participant plans to go canvassing, (iii) an indicator for whether a participant knocks on any door, (iv) the number of doors that a participant knocks on, and (v) the number of days a participant goes canvassing. We construct the index by first standardizing each outcome using the control group mean and standard deviation, then calculating the total of the standardized variables, and finally re-standardizing the sum to have mean zero and standard deviation of one.

¹⁰To show that our treatment effects are not driven by outliers, Figure A4 presents the cumulative distribution for the treatment and control group.

the results on intentions, we again do not find a significant effect on whether engaged in any canvassing (though treated activists are 1.5 percentage points less likely to canvass, 12% of the control mean). Finally, we investigate the impact on the pre-specified index of all five outcomes capturing intentions and actual behavior jointly. We observe a decrease of 0.097 (*s.e.* = 0.042) standard deviations in this summary measure of canvassing intentions and behavior.

The treatment effects on canvassing behavior are strongest in week seven and eight just before the election when overall activity was highest (49% of the control mean for canvassed doors or 0.126 standard deviations on the respective canvassing index). Figure A3 displays the development of treatment effects over time and confirms this pattern. To explore why this might be the case, we study whether the information provided by the treatment could be reinforced over time by an individual's observation on the ground. Table A11 shows that the effects are indeed stronger for activists in localities with high overall activity levels. This result suggests that learning through observation might indeed reinforce the provided information and lead to the observed dynamics.

Robustness: The treatment effects are unlikely to be driven by differential selection into downloading and using the smartphone application. We do not find a significant effect on application download (Online Appendix Table A3). Furthermore, the observable characteristics of supporters who downloaded the application are similar to those who indicated any canvassing intention (Online Appendix Table A4). Hence, it is unlikely that technological barriers in using the smartphone application led to a substantial mismeasurement of canvassed doors.

It is also unlikely that differential reporting among app users drives the results. First, if learning that more people participate induces social desirability bias we would expect an increase and not a decrease in reported doors. Second, it could be that activists with a low number of canvassed doors are now reluctant to record them in the app. This would imply that treatment effects are concentrated among the lower end of the doors distribution. However, in panel (f) of Figure A4 we observe that treatment effects are

concentrated among roughly the top 60% of canvassers.

Taken together, these results indicate that, on average, increases in supporters' beliefs about their peers' efforts decrease both canvassing intentions and behavior. As such, our findings provide evidence on strategic substitutability in political activists' effort choices.¹¹

4.3 Heterogeneity in Treatment Effects

Who drives these treatment effects? The theoretical model in Appendix Section A makes predictions for heterogeneity across individuals. Specifically, the model posits that individuals who put a relatively lower weight on social as compared to instrumental motives will exhibit a stronger pattern of strategic substitutability. Vice versa, for individuals with stronger social motives, the pattern of strategic substitutability should be weaker. We test this prediction empirically.

To test for heterogeneity by social motives, we use a variety of proxies for the strength of the social connection to the party. In the pre-analysis plan we had pre-specified analyzing heterogeneity by participants' (i) any prior canvassing experience for the same party, (ii) whether they are a party member, and (iii) their years of party membership. To keep the analysis as parsimonious as possible, we first employ a simple principal component analysis (PCA) of these three variables to study heterogeneous treatment effects using the standardized first principle component of the three variables. Intuitively, we use the first principle component as an index capturing the strength of social ties to the party.

Before turning to the heterogeneity analysis, we validate this index as a well-suited measure capturing party supporters' social connectedness and social motives. Table A6

¹¹The same pattern holds when we restrict our sample to underestimators only (Online Appendix Tables A14 to A19). We lack statistical power to draw firm conclusions for the subsample of overestimators. We find imprecisely measured decreases in canvassing effort in response to the information treatment (Online Appendix Table A20). This potential discrepancy in strategic behavior between over- and underestimators could be due to various factors. First, they could be caused by endogenous pre-treatment beliefs that are related to respondents' underlying motives to canvass. Second, beliefs could be measured with error leading to misclassification of under- and overestimators (Haaland et al., 2021).

shows the correlation between the number of party members a supporter knows personally and the index using data from a post-election survey administered to a different sample of the same population of supporters six weeks after the election. We find that an increase in the number of known party members by one standard deviation (31 members) is associated with 0.18 ($p < 0.001$) higher value on the index. This supports the first principle component as a measure of party supporters' social connectedness and social motives in the following analysis.

In line with our hypothesis, supporters with weaker connections to the party exhibit a larger negative treatment effect relative to supporters with stronger connections (Panel B of Table 1). The treatment effect heterogeneity is of statistical and economic significance for both intentions and behavior: treated supporters with one-standard deviation stronger connections to the party exhibit a reduction of the treatment effect on intended days of 0.76 ($s.e. = 0.37$). The attenuation of the treatment effect on canvassing intentions translates into an attenuated treatment effect on canvassing behavior. Treated supporters with one standard deviation weaker connections to the party knock on 16.6 ($s.e. = 7.2$) fewer doors. The complementing treatment effect heterogeneity for behavioral outcomes over time is illustrated by Figure A6. Finally, in terms of the summary index measuring canvassing intentions and behavior jointly, we find that treated supporters with one-standard deviation stronger connections to the party display a 0.084 ($s.e. = 0.045$) standard deviation smaller decrease in canvassing.¹²

To further illuminate the underlying mechanisms, we also study heterogeneous treatment effects by the perceived social cohesion of local party chapters. For this purpose, we use the question "How strong is the (social) cohesion in your local party chapter?" with answers on a Likert scale from 0 (very weak) to 6 (very strong) posed in the post-election survey mentioned above. We average responses at the local level, standardize the average, and match the resulting local levels of cohesion to individuals in our experimental

¹²We also examine heterogeneous responses for each of the variables used in the PCA separately which further corroborates that supporters with weaker social ties to the party drive our treatment effects (Tables A7, A8, and A9). The results are also similar when we control for the interaction of pre-specified controls and the treatment dummy (Table A10).

sample who downloaded the application and thus have location data.¹³

We find that individuals in locations with low levels of perceived cohesion exhibit stronger negative treatment effects. Specifically, Table A12 shows that, on average, individuals in locations with one standard deviation higher local cohesion exhibit a 0.31 standard deviation weaker treatment effect on the pre-specified index ($p < 0.1$).

Put together, these results suggest that social connectedness and cohesion can counterbalance strategic substitutability and act as a force for strategic complementarity in the effort choices of political activists.¹⁴

4.4 Motives Underlying Effort Adjustments

In an additional survey among 150 political activists, we elicit the motives underlying activists' hypothetical decisions to increase or decrease their participation in the campaign in response to learning about higher peer effort (see Bursztyn et al. (2022) for a similar approach to elicit motives in a different setting). We recruited respondents through social media groups affiliated with various political parties, including supporters of the party we collaborated with in the field experiment presented earlier.¹⁵

We first ask supporters how they would adjust their campaigning effort in response to learning about higher effort of their peers. Next, we ask supporters to describe the reasoning underlying their decision with an unprompted open-ended question which avoids priming respondents on particular motivations. On the subsequent screen, we also elicit structured responses based on theoretical considerations and pilot data from the open-ended question (see Appendix G for the full instructions). This structured data allows us to validate our hand-coding scheme and to classify individuals whose open-

¹³We drop 19 observations for this analysis because there were no respondents in their locality in the post-election survey.

¹⁴An alternative mechanism might be that supporters with stronger social connections to the party learn more quickly about the true level of activism and thus are less affected by the provided information. However, this cannot explain heterogeneity in the effects on intentions, which are measured prior to any further learning about peer effort.

¹⁵The sample is gender-balanced, the average age is 30 and approximately 35% of respondents are members of any political party (see Table A34 for details).

ended responses we could not cleanly map into a specific motive.¹⁶ The key advantage of the open-ended elicitation relative to the structured responses is that it is less prone to ex-post rationalization of motives.

We hand-code open-ended responses using the following main categories, which are closely related to influential theoretical mechanisms in the literature: For motives connected to strategic substitutability, we code “free-rider” motives (Olson, 1965) and “substitution to other effort domains” (Dewatripont et al., 2000). For motives underlying strategic complementarity, we code increased “identity” (Akerlof and Kranton, 2000), “enjoyment” (Uhlaner, 1989), “social image concerns” (Bursztyn and Jensen, 2017), “reciprocity” (Falk and Fischbacher, 2006), and perceived “increase in the returns to activism” (Barbera and Jackson, 2019). Respondents that mention a general increase in motivation that we cannot classify precisely into any of the previous motives are classified as ‘other motivation’. Appendix Table A32 contains additional details on the hand-coding procedure and example responses.

Figure 2 illustrates the results. Panel A shows that 35% of participants state that they would decrease their effort, 18% would increase their effort and 47% would not change their effort in response to learning about higher peer effort, consistent with our main field experimental evidence on strategic substitutability.¹⁷

Next, we study activists’ motives for strategic substitutability. Panel B of Figure 2 highlights that based on the open-ended data 79% of respondents who say they would decrease their effort mention free-riding incentives, while 23% mention substitution of effort to other activities.¹⁸ Finally, Panel C presents the data on motives for respondents exhibiting strategic complementarity. Concerns related to social identity and enjoyment value are mentioned by 22% of respondents, respectively. Perceived increased returns

¹⁶Our hand-coded data based on the open-ended responses is very predictive for choices among the structured categories (see Table A33 for details).

¹⁷When considering heterogeneity by the same index of connectedness to respondents’ favorite party, we observe a pattern that is very similar to the experimental evidence (Panel A of Appendix Figure A8). Respondents with below-median connectedness to their favorite party are 10 percentage points more likely to exhibit strategic substitutability and 10 percentage points less likely to exhibit strategic complementarity compared to respondents with above-median connectedness. Panel B of Appendix Figure A8 shows qualitatively similar patterns of heterogeneity for social and free-riding motives.

¹⁸In Section H we provide additional evidence on a muted role of effort substitution.

are mentioned by 26% of respondents, underscoring that instrumental motives are, to some extent, also a driver of strategic complementarity. On the other hand, reciprocity and social image concerns are less prevalent with 4% and 7%, respectively. 37% fall into a category we call “other motivation”, which comprises statements about a general increase in motivation in response to learning that more members plan to canvass that we could not cleanly map to any of the other motives.

To analyze the motives of individuals coded as “other motivation” in more detail, Panel B of Figure A7 displays the structured responses for this subgroup.¹⁹ Identity and enjoyment are also very prevalent while increasing returns to canvassing are less common. Reciprocity emerges as another prevalent motivation among respondents whose open-ended responses we could not classify. Considering the open text and structural responses together, our data suggests that social motives such as increased identity with the party and increased enjoyment of the activity are most common for respondents who exhibit strategic complementarity.²⁰

Our data also allows us to explore the extent to which behavioral responses and motives underlying these responses differ across political parties in our setting. We find that respondents’ motives are not predictive of being a supporter or member of our collaborating party. We regress dummies for all coded motives on a dummy indicating support for our collaborating party. An F-test of joint significance of dummies yields $p = 0.90$.

5 Conclusion

We conducted a nationwide natural field experiment in collaboration with a major European party during a recent national election. We randomly provide canvassers with true information about the canvassing intentions of their peers. When learning that more peers participate in canvassing than previously believed, canvassers significantly reduce

¹⁹Panels A and C display the distribution of motives according to the structured responses for respondents with strategic complementarity and substitutability, respectively.

²⁰None of our respondents mentioned changes in career incentives arising from higher peer participation. Moreover, social motives were not mentioned as a reason for a decrease in effort levels.

both their canvassing intentions and behavior. An additional survey reveals that there is strong heterogeneity in motives driving supporters' behavioral responses. It reveals that the free-rider logic underlies most of the substitutability of effort choices, while concerns related to social identity and enjoyment value are the most prevalent social motives driving complementarity of effort choices.

How do our findings inform the broader literature on strategic interactions among political activists? First, our results underscore that strategic interactions have a quantitatively important role in shaping political activism. We document that, when being informed about an increase in peer effort, activists reduce their effort by 38% compared to the control group mean. This is sizable but roughly in line with effect sizes of similar experiments. For example, in the same context we document a 30% reduction in canvassing activity relative to the control mean in response to increased competition by opposing activists (Hager et al., 2021). In the context of student protests in Hong Kong, Cantoni et al. (2019) find a reduction in the likelihood of protesting of 61% relative to the control mean (for underestimators) and, in the context of right- and left-wing protests in Germany, Hager et al. (2022) find effect sizes between 15% and 23% of the control group mean.

Second, this paper complements existing literature that documents that the size and sign of strategic interaction vary across contexts. Interactions between activists supporting the same cause have been shown to exhibit both strategic complementarity (González, 2020) and substitutability (Cantoni et al., 2019). Strategic interactions with opposing activists also vary across contexts (Hager et al., 2022, 2021). This paper reconciles these seemingly conflicting results by showing that strategic interactions are not uniform, but instead can differ at the level of individuals (even within the same context and within the same political party).

We see several fruitful avenues for future work. First, while this study identifies the presence of several distinct social motives, future research may scrutinize the quantitative importance of these different social motives. Second, it would be useful to go beyond a reduced form framework and to microfoud a model with different social motives ex-

plicity. Finally, future work should try to better understand how political organizations can design their campaigns and messaging to trigger certain social motives as a way to overcome free-rider incentives.

References

- Akerlof, George A and Rachel E Kranton (2000). "Economics and identity." *The quarterly journal of economics*, 115(3), 715–753.
- Banerjee, Abhijit, Lakshmi Iyer, and Rohini Somanathan (2007). "Public Action for Public Goods." In *Handbook of Development Economics*, pp. 3117–3154.
- Barbera, Salvador and Matthew O Jackson (2019). "A model of protests, revolution, and information." *Revolution, and Information* (October 2019).
- Bursztyn, Leonardo, Davide Cantoni, David Y Yang, Noam Yuchtman, and Y Jane Zhang (2021). "Persistent Political Engagement: Social Interactions and the Dynamics of Protest Movements." *American Economic Review: Insights*, 3(2), 233–50.
- Bursztyn, Leonardo, Georgy Egorov, Ingar K Haaland, Aakaash Rao, and Christopher Roth (2022). "Justifying Dissent." *NBER Working Paper 29730*.
- Bursztyn, Leonardo and Robert Jensen (2017). "Social image and economic behavior in the field: Identifying, understanding, and shaping social pressure." *Annual Review of Economics*, 9, 131–153.
- Cantoni, Davide, David Y Yang, Noam Yuchtman, and Y Jane Zhang (2017). "The Fundamental Determinants of Anti-Authoritarianism." *Working Paper*.
- Cantoni, Davide, David Y Yang, Noam Yuchtman, and Y Jane Zhang (2019). "Protests as Strategic Games: Experimental Evidence from Hong Kong's Antiauthoritarian Movement." *The Quarterly Journal of Economics*, 134(2), 1021–1077.
- Coate, Stephen and Michael Conlin (2004). "A Group Rule-Utilitarian Approach to Voter Turnout: Theory and Evidence." *American Economic Review*, 94(5), 1476–1504.
- Dewatripont, Mathias, Ian Jewitt, and Jean Tirole (2000). "Multitask agency problems: Focus and task clustering." *European economic review*, 44(4-6), 869–877.
- Downs, Anthony (1957). "An Economic Theory of Political Action in a Democracy." *Journal of Political Economy*, 65(2), 135–150.

- Enikolopov, Ruben, Alexey Makarin, and Maria Petrova (2020). "Social media and protest participation: Evidence from Russia." *Econometrica*, 88(4), 1479–1514.
- Falk, Armin and Urs Fischbacher (2006). "A Theory of Reciprocity." *Games and Economic Behavior*, 54(2), 293 – 315.
- Feddersen, Timothy and Alvaro Sandroni (2006). "A Theory of Participation in Elections." *American Economic Review*, 96(4), 1271–1282.
- Fehr, Ernst and Simon Gächter (2000). "Cooperation and Punishment in Public Goods Experiments." *American Economic Review*, 90(4), 980–994.
- Gerber, Alan, Mitchell Hoffman, John Morgan, and Collin Raymond (2020). "One in a Million: Field Experiments on Perceived Closeness of the Election and Voter Turnout." *American Economic Journal: Applied Economics*, 12(3), 287–325.
- Gerber, Alan S., Donald P. Green, and Christopher W. Larimer (2008). "Social Pressure and Voter Turnout: Evidence From a Large-Scale Field Experiment." *American Political Science Review*, 102(1), 33–48.
- Gerber, Alan S, Daniel P Kessler, and Marc Meredith (2011). "The Persuasive Effects of Direct Mail: A Regression Discontinuity Based Approach." *The Journal of Politics*, 73(01), 140–155.
- González, Felipe (2020). "Collective action in networks: Evidence from the Chilean student movement." *Journal of Public Economics*, 188, 104220.
- Green, Donald P, Mary C McGrath, and Peter M Aronow (2013). "Field Experiments and the Study of Voter Turnout." *Journal of Elections, Public Opinion & Parties*, 23(1), 27–48.
- Haaland, Ingar, Christopher Roth, and Johannes Wohlfart (2021). "Designing Information Provision Experiments." *Journal of Economic Literature*, forthcoming.
- Hager, Anselm, Lukas Hensel, Johannes Hermle, and Christopher Roth (2022). "Group Size and Protest Mobilization across Movements and Countermovements." *American Political Science Review*, forthcoming.

- Hager, Anselm, Johannes Hermle, Lukas Hensel, and Christopher Roth (2021). "Does Party Competition Affect Political Activism?" *Journal of Politics*, 83(4), 1681–1694.
- Hardin, Russell (2015). *Collective Action*. Routledge.
- Kendall, Chad, Tommaso Nannicini, and Francesco Trebbi (2014). "How Do Voters Respond to Information? Evidence from a Randomized Campaign." *American Economic Review*, 105(1), 322–353.
- Manacorda, Marco and Andrea Tesei (2020). "Liberation Technology: Mobile Phones and Political Mobilization in Africa." *Econometrica*, 88(2), 533–567.
- McClendon, Gwyneth H. (2014). "Social Esteem and Participation in Contentious Politics: A Field Experiment at an LGBT Pride Rally." *American Journal of Political Science*, 58(2), 279–290.
- Neuenschwander, Giordano and Florian Foos (2021). "Mobilizing Party Activism: A Field Experiment With Party Members and Sympathizers." *Electoral Studies*, 72(April), 102341.
- Olson, Mancur (1965). *The Logic of Collective Action: Public Goods and the Theory of Groups*. Schocken Books.
- Ostrom, Elinor (2000). "Collective Action and the Evolution of Social Norms." *The Journal of Economic Perspectives*, 14(3), 137–158.
- Palfrey, Thomas R and Howard Rosenthal (1984). "Participation and the Provision of Discrete Public Goods: a Strategic Analysis." *Journal of Public Economics*, 24(2), 171–193.
- Passarelli, Francesco and Guido Tabellini (2017). "Emotions and Political Unrest." *Journal of Political Economy*, 125(3), 903–946.
- Perez-Truglia, Ricardo and Guillermo Cruces (2017). "Partisan Interactions." *Journal of Political Economy*, 125(4), 1208–1243.

Pons, Vincent (2018). "Will a Five-Minute Discussion Change Your Mind? A Country-wide Experiment on Voter Choice in France." *American Economic Review*, 108(6), 1322–63.

Shadmehr, Mehdi (2021). "Protest Puzzles: Tullock's Paradox, Hong Kong Experiment, and the Strength of Weak States." *Quarterly Journal of Political Science*, 16(3), 245–264.

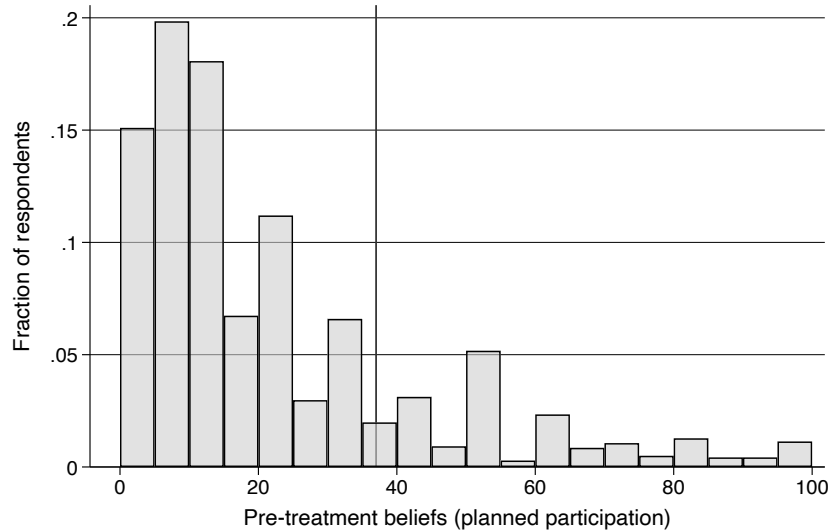
Shadmehr, Mehdi and Dan Bernhardt (2011). "Collective Action With Uncertain Payoffs: Coordination, Public Signals, and Punishment Dilemmas." *American Political Science Review*, 105(4), 829–851.

Uhlener, Carole Jean (1989). "'Relational Goods' and Participation: Incorporating Sociality into a Theory of Rational Action." *Public Choice*, 62(3), 253–285.

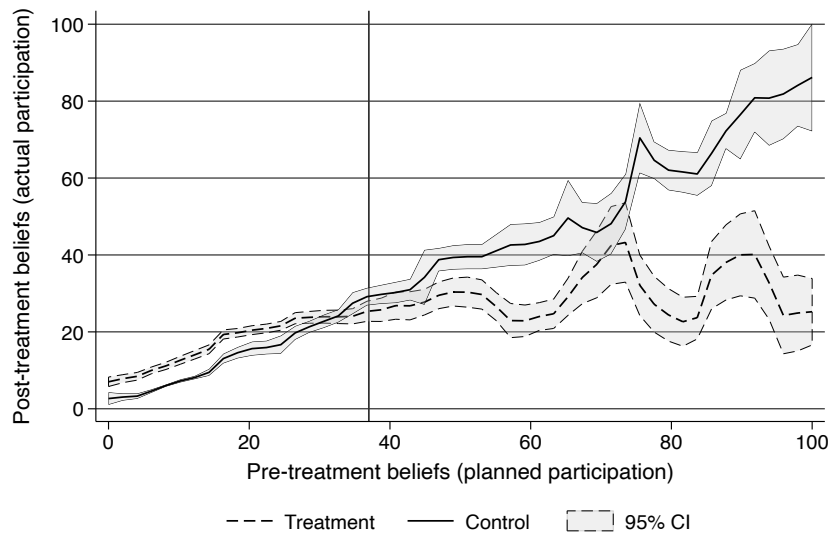
6 Main Figures and Tables

Figure 1: Pre- and post-treatment beliefs about canvassing campaign participation

Panel A: Distribution of pre-treatment beliefs about planned participation



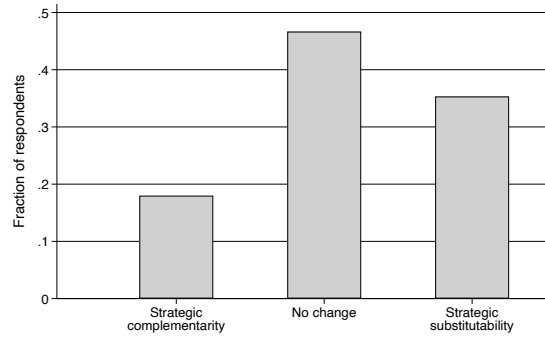
Panel B: Non-parametric relationship between pre-treatment beliefs about planned participation and post-treatment beliefs about actual participation



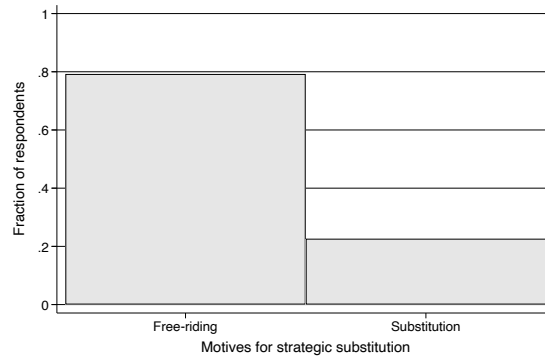
Notes: Panel A of Figure 1 shows the distribution of pre-treatment beliefs about the fraction of party members who plan to participate in the party's door-to-door canvassing campaign. The vertical line (37%) corresponds to the treatment information. Panel B of Figure 1 displays the non-parametric relationship between post-treatment beliefs about actual participation of party members and pre-treatment beliefs about the planned participation of party members. The estimates are obtained using local polynomial regressions of degree 1.

Figure 2: Strategic interactions and stated motives

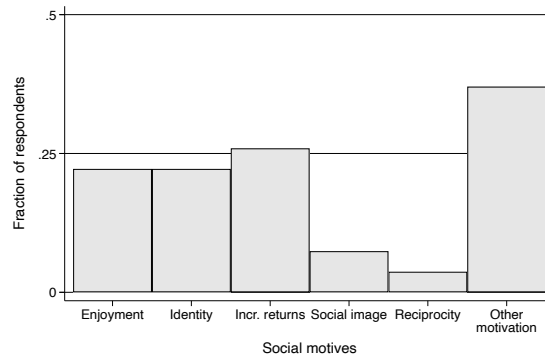
Panel A: Effort adjustments



Panel B: Motives conditional on strategic substitutability



Panel C: Motives conditional on strategic complementarity



Notes: Panel A of Figure 2 shows the distribution of the nature of strategic interactions in a hypothetical vignette. Section G describes the vignette survey in detail. Panel B of Figure 2 displays the motives for respondents who exhibit strategic substitutability. Panel C of Figure 2 displays the motives for respondents who exhibit strategic complementarity. Motives are based on the following vignette (for the exact wording see Online Appendix section G): First, respondents are asked to imagine that, during a general election campaign, their favorite party sent a survey showing that more party members than they previously thought plan to participate in the canvassing campaign. They are then asked whether they would increase, decrease, or not change their canvassing behavior. Finally, respondents were presented an open text box beneath the question "Why would the results of this survey influence or not influence your decision to go canvass?". The data displayed is based on hand-coding of open text responses into pre-specified categories. The sample (N=150) was recruited through social media posts in groups of potential political activists.

Table 1: Main effects

| | Belief | Intentions | | App Data | | | App Data: Week 7/8 | | | Index | |
|--|----------------------|---------------------|----------------------|-------------------|-------------------|----------------------|--------------------|---------------------|---------------------|---------------------|----------------------|
| | % canvassing | Any | Days | Any | Days | Doors | Any | Days | Doors | Overall | Week 7/8 |
| Panel A: Pooled treatment effects | | | | | | | | | | | |
| Treatment | 1.238** (0.607) | -0.012 (0.023) | -1.040*** (0.368) | -0.015 (0.015) | -0.146 (0.136) | -13.393* (6.899) | -0.024* (0.013) | -0.120** (0.055) | -5.992** (2.448) | -0.097** (0.042) | -0.126*** (0.043) |
| Panel B: Interaction with strength of connection to the party | | | | | | | | | | | |
| Treatment | 1.238** (0.599) | -0.007 (0.024) | -1.005*** (0.368) | -0.015 (0.015) | -0.148 (0.136) | -13.452* (6.908) | -0.024* (0.013) | -0.121** (0.055) | -6.046** (2.458) | -0.094** (0.042) | -0.122*** (0.043) |
| Treatment × Strength of connection to party (PCA) | 3.064*** (0.713) | 0.028 (0.023) | 1.013*** (0.376) | 0.006 (0.012) | 0.140 (0.127) | 15.264*** (5.905) | 0.017 (0.011) | 0.041 (0.055) | 4.509** (1.926) | 0.098** (0.039) | 0.099** (0.040) |
| Strength of connection to party (PCA) | -3.635*** (0.640) | 0.079*** (0.018) | -0.085 (0.331) | 0.005 (0.010) | -0.027 (0.124) | -8.901 (5.816) | -0.004 (0.010) | 0.009 (0.056) | -2.015 (1.919) | 0.026 (0.035) | 0.029 (0.037) |
| Control mean | 16.039 | 0.487 | 4.361 | 0.128 | 0.651 | 35.330 | 0.085 | 0.263 | 12.144 | -0.017 | -0.004 |
| Observations | 1397 | 1395 | 1395 | 1411 | 1411 | 1411 | 1411 | 1411 | 1411 | 1395 | 1395 |

Notes: Table 1 presents the main treatment effects. Panel A displays the pooled treatment effects. Panel B presents treatment effects interacted with a summary measure of connectedness to the party. The measure for strength of connection to the party is the first principal component of three pre-specified dimensions of heterogeneity (previous canvassing experience, party membership, and party membership duration). This summary measure is standardized to have mean zero and standard deviation one.

Outcome variables are as follows. “Beliefs” captures the belief about the fraction of fellow party members who actually go canvassing. “Intentions” captures whether a participant intends to engage in any canvassing (Any) and the intended number of days (Days). “App Data” captures whether a participant actually engages in any canvassing (Any), as well as the number of days (Days) and the number of doors a participant knocks on (Doors, winsorized at the 99th percentile). “App: Week 7/8” captures actual engagement in weeks 7 and 8 after the treatment (one or two weeks before the election). “Index” indicates two summary measures. “Overall” describes a pre-specified index of all five outcome variables capturing canvassing intentions and behavior jointly. “Week 7/8” describes an index of the outcomes displayed under “Intentions” and “App: Week 7/8”. Treatment effects are obtained conditional on pre-specified control variables: party membership, number of years of party membership, age, sex, whether a participant has participated in a canvassing training, whether a participant has already downloaded the online application, whether a participant has participated in canvassing before this federal election and whether a participant has participated in canvassing for this federal election. We also include a dummy indicating overestimators as we use the pooled sample for our main specification. When we control for the strength of connection to the party we drop all components of the index from the control variables. We include all individuals who saw the treatment screen in our sample even when they did not complete the full survey as pre-specified in the pre-analysis plan. This leads to small variations in sample size across survey-based and behavioral outcomes. * $p < 0.10$, ** $p < 0.05$, *** $p < 0.01$

For Online Publication

Online Appendix Section A contains a mathematical framework. Online Appendix Section A.1 provides supplementary proofs and derivations for this model. Online Appendix Section B provides the invitation email, followed by Online Appendix Section C providing the survey instrument. Online Appendix Section D describes deviations from the pre-analysis plan.

Online Appendix Section E contains additional figures. Figure A2 displays the relationship between intentions and actual canvassing behavior. Figure A4 show the cumulative distribution of intended days as well as actual days and doors canvassed.

Online Appendix Section F contains additional tables. Table A1 contains summary statistics. Table A2 shows balance tests. Table A3 displays treatment effects on application download. Table A4 shows predictors of canvassing intentions and application download. Table A5 shows results using both under- and overestimators. Table A6 shows correlations between our proxies for social motives and social connections and career concerns in the post-election survey. Table A7 shows heterogeneity by previous canvassing experience. Table A8 shows heterogeneity by party membership. Table A9 displays heterogeneity by party membership duration. Table A10 displays results when the treatment dummy is interacted with all control variables. Table A11 displays treatment effects by total local activity. Table A12 displays treatment effects by perceived cohesion in the local party chapter. Table A13 shows the effects by application download prior to the experiment. Tables A14 to A19 provide results for underestimators. Tables A20 to A25 provide results for overestimators. Tables A26 to A31 provide results for underestimators without pre-specified controls. Section G contains details about the mechanism survey and additional results. Table A32 displays the coding scheme used for the analysis of activists' motives. Section H presents additional results on substitution effects to other effort domains.

A Conceptual framework

Assumptions: To motivate our empirical design and guide our analysis, we present a simple partial-equilibrium model of an individual’s decision to participate in canvassing. A canvasser’s utility depends on her own canvassing effort, d_i , and her beliefs about fellow supporters’ canvassing efforts, d_{-i} , according to

$$u_i(d_i) = (1 - \alpha_i)g(d_i, d_{-i}) + \alpha_i h(d_i, d_{-i}) - c_i(d_i) - \tilde{c}_i \cdot \mathbb{1}(d_i > 0). \quad (2)$$

In this equation, $g(d_i, d_{-i})$ denotes an activist’s instrumental utility from canvassing, while $h(d_i, d_{-i})$ represents the social utility gained from canvassing. Both $g(d_i, d_{-i})$ and $h(d_i, d_{-i})$ are assumed to be continuous and twice differentiable. Critically, both terms depend on own effort d_i but also on believed peer efforts d_{-i} . Instrumental and social utility have individual-specific relative weights $1 - \alpha_i$ and α_i , respectively.

Costs of canvassing are captured by $c_i(d_i)$ with $c', c'' > 0$ and $c'(0) = 0$, and individual-specific fixed costs $\tilde{c}_i \sim F$. We assume that all idiosyncratic properties are summarized by type $i \in I$, distributed according to $\Phi \perp F$. Canvasser i chooses canvassing effort, d_i , to maximize her utility u_i given the reservation utility from not participating in canvassing $(1 - \alpha_i)g(0, d_{-i})$.

We further clarify the properties of instrumental utility $g(d_i, d_{-i})$ and social utility $h(d_i, d_{-i})$. Instrumental utility $g(d_i, d_{-i})$ comprises two motives: first, the value of votes obtained through canvassed doors. In other words, activists may be motivated to participate in canvassing to signal their commitment to the party and thereby increase their chances of getting promoted. We thus assume that $\frac{\partial g(d_i, d_{-i})}{\partial d_i} > 0$. Critically, we also posit that the instrumental returns to canvassing are decreasing in peer effort (i.e. $\frac{\partial^2 g(d_i, d_{-i})}{\partial d_i \partial d_{-i}} < 0$). In the context of our experiment, this assumption is likely to hold for two reasons. First, instrumental returns to canvassing are decreasing in peer effort if marginal benefits of additional votes or the returns to canvassing are (perceived to be) decreasing, an assumption which is plausible in our setting. The party encouraged local canvassers to target the most promising areas first, which implies that the expected returns to addi-

tional canvassing are likely to decrease in the total canvassing activity.²¹ Second, as the number of effort providing group members increases (included in d_i , the private incentives for canvassing will decrease as the direct benefits of winning have to be distributed among more individuals (Banerjee et al., 2007). In our context such rival benefits are political appointments, candidacies and, to a lesser extent, staff positions with elected politicians.

The term $h(d_i, d_{-i})$ represents the social utility gained from canvassing for which we assume $\frac{\partial h(d_i, d_{-i})}{\partial d_i} \geq 0$. Most generally, this term captures the quality of canvassing as a relational good (Uhlener, 1989) that is enjoyed only through the consumption of others. In line with a large literature on conditional cooperation in collective action (Ostrom, 2000), we hence assume that social returns to canvassing are increasing in peer effort, i.e. $\frac{\partial^2 h(d_i, d_{-i})}{\partial d_i \partial d_{-i}} > 0$. A specific psychological foundation for this assumption is provided by theories of reciprocity (Falk and Fischbacher, 2006; Fehr and Gächter, 2000) in which individuals receive utility from rewarding kind actions of others.

Intensive margin responses: We first analyze intensive margin responses due to a change in beliefs about peer canvassing effort d_{-i} . The model yields that the strategic interaction between canvassers is determined by the relative importance of changes in the instrumental and social returns to canvassing.

- Effort choices will be **strategic complements** ($\frac{\partial d_i^*}{\partial d_{-i}} > 0$) iff $\alpha_i \frac{\partial^2 h(d_i, d_{-i})}{\partial d_i \partial d_{-i}} > -(1 - \alpha_i) \frac{\partial^2 g(d_i, d_{-i})}{\partial d_i \partial d_{-i}}$, namely iff changes in social returns dominate changes in instrumental returns.
- Effort choices will be **strategic substitutes** ($\frac{\partial d_i^*}{\partial d_{-i}} < 0$) iff $-(1 - \alpha_i) \frac{\partial^2 g(d_i, d_{-i})}{\partial d_i \partial d_{-i}} > \alpha_i \frac{\partial^2 h(d_i, d_{-i})}{\partial d_i \partial d_{-i}}$, namely iff changes in instrumental returns dominate changes in social returns.

Proofs of these results can be found in Appendix section A.1. The above inequalities combine two factors. On the one hand, the more important social returns are for a given

²¹In addition, the party only gains little political power from winning votes beyond a threshold that ensures that it forms part of the government.

individual (i.e. the larger α_i) the more likely it is that effort choices are strategic complements. On the other hand, the nature of strategic interactions depends on the shape of the return functions (both instrumental and social). The relevant comparative static is the slope of the marginal return to own canvassing effort with respect to the effort of others. Put differently, what matters is how quickly an activist's return to canvassing changes as others change their canvassing effort.

Heterogeneity by strength of instrumental and social motives: How do the patterns of strategic interaction vary with the relative importance of social motives α_i ? Intuitively, we show in Appendix section A.1 that individuals who put a sufficiently high weight on instrumental utility will exhibit strategic substitutability in their effort choices, whereas individuals who put a sufficiently high weight on social motives will exhibit strategic complementarity in their effort choices.

In the context of our experiment, we expect stronger social connectedness to the party to trigger a higher weight on social motives α_i , as stronger social connectedness plausibly increases the reciprocity to other party members and enhances identification with the party. We test this prediction empirically by estimating how the treatment effects vary with proxies such as having prior canvassing experience, being a member of the party, and the duration of membership.

Extensive margin responses: Finally, we consider how extensive margin responses depend on individuals' beliefs about their peers' canvassing effort. Note that an individual i will turn out canvassing if her cost of canvassing \tilde{c}_i is lower than a cutoff value \tilde{c}_i^* . Hence, the fraction of individuals of type i deciding to participate in canvassing is equal to $F(\tilde{c}_i^*)$. We show in Appendix section A.1 that the marginal extensive margin response to an increase in d_{-i} is equal to

$$\left((1 - \alpha_i) \left(\frac{\partial g(d_i^*, d_{-i})}{\partial d_{-i}} - \frac{\partial g(0, d_{-i})}{\partial d_{-i}} \right) + \alpha_i \frac{\partial h(d_i^*, d_{-i})}{\partial d_{-i}} \right) \cdot f(\tilde{c}_i^*),$$

where d_i^* is the optimal canvassing effort conditional on exerting positive canvassing effort. Note that the sign of the effect depends on the relative strength of changes in instrumental utility ($\frac{\partial g(d_i^*, d_{-i})}{\partial d_{-i}} - \frac{\partial g(d_{-i})}{\partial d_{-i}}$) and social utility ($\frac{\partial h(d_i^*, d_{-i})}{\partial d_{-i}}$). Most importantly, however, the effect size critically depends on the mass of marginal individuals $f(\tilde{c}_i^*)$, who are close to being indifferent to participating or not. For those individuals the potential benefits of canvassing are roughly equal to the sum of fixed and variable costs. If $f(\tilde{c}_i^*)$ is low (high), the effect size on the extensive margin will be comparatively low (high) relative to the intensive margin. Differences in the effect sizes between the extensive and intensive margin may hence be interpreted as indicators of the mass of marginal individuals.

A.1 Supplementary results and proofs

We model agent i 's utility of choosing her own canvassing effort d_i given fellow supporters' canvassing effort (d_{-i}) according to:

$$u_i(d_i) = (1 - \alpha_i)g(d_i, d_{-i}) + \alpha_i h(d_i, d_{-i}) - c_i(d_i) - \tilde{c}_i \cdot \mathbb{1}(d_i > 0) \quad (3)$$

where $g(d_i, d_{-i})$ represents the instrumental utility gained from either the overall level of canvassing activity (i.e. additional votes) or the utility gained from signaling one's commitment. We assume $\frac{\partial g(d_i, d_{-i})}{\partial d_i} > 0$ and $\frac{\partial^2 g(d_i, d_{-i})}{\partial d_i \partial d_{-i}} < 0$. The term $h(d_i, d_{-i})$ represents social motives. We assume $\frac{\partial h(d_i, d_{-i})}{\partial d_i} \geq 0$ and $\frac{\partial^2 h(d_i, d_{-i})}{\partial d_i \partial d_{-i}} > 0$. The term α_i denotes an individual-specific relative weight on social motives. $c_i(d_i)$ represents individual-specific costs of canvassing for which we assume $c'(0) = 0$, and $c', c'' > 0$. For $g(\cdot)$, $h(\cdot)$, and $c(\cdot)$ we assume continuity and that they are twice differentiable. \tilde{c}_i is an individual-specific fixed costs of doing any canvassing distributed according to F . Agent i chooses d_i to maximize her utility u_i , where the reservation utility from not engaging in canvassing is equal to $(1 - \alpha_i)g(0, d_{-i})$. We assume that all idiosyncratic properties are summarized by type $i \in I$, distributed according to $\Phi \perp F$.

Formally, agents choose $d_i \geq 0$ such that

$$d_i^* = \operatorname{argmax}_{d_i} (1 - \alpha_i)g(d_i, d_{-i}) + \alpha_i h(d_i, d_{-i}) - c_i(d_i) - \tilde{c}_i \cdot \mathbb{1}(d_i > 0) \quad (4)$$

if $u_i(d_i^*) \geq (1 - \alpha_i)g(0, d_{-i})$ and $d_i^* = 0$ otherwise.

First, we investigate intensive margin responses and focus on interior solutions of this optimization problem. In this case, agent i sets her canvassing effort d_i according to the following first order condition:

$$\frac{\partial u(d_i)}{\partial d_i} = (1 - \alpha_i) \frac{\partial g(d_i, d_{-i})}{\partial d_i} + \alpha_i \frac{\partial h(d_i, d_{-i})}{\partial d_i} - \frac{\partial c_i(d_i)}{\partial d_i} = 0 \quad (5)$$

Without further functional form assumptions there is no closed form solution for the optimal effort choice d_i^* . However, it is possible to analyze i 's optimal response to changes in d_{-i} using implicit differentiation:

$$\frac{\partial d_i^*}{\partial d_{-i}} = - \frac{(1 - \alpha_i) \frac{\partial^2 g(d_i, d_{-i})}{\partial d_i \partial d_{-i}} + \alpha_i \frac{\partial^2 h(d_i, d_{-i})}{\partial d_i \partial d_{-i}}}{(1 - \alpha_i) \frac{\partial^2 g(d_i, d_{-i})}{\partial d_i \partial d_i} + \alpha_i \frac{\partial^2 h(d_i, d_{-i})}{\partial d_i \partial d_i} - \frac{\partial^2 c(d_i)}{\partial d_i \partial d_i}} \quad (6)$$

Note that the denominator is negative, as we require d^* to be at a local maximum. This is guaranteed, for instance, if we assume $\frac{\partial^2 g(d_i, d_{-i})}{\partial d_i \partial d_i} < 0$ and $\frac{\partial^2 h(d_i, d_{-i})}{\partial d_i \partial d_i} \leq 0$. This immediately yields the intensive margin result presented in the main text.

Next, we investigate how $\frac{\partial d_i^*}{\partial d_{-i}}$ varies with the strength of social motives. Consider the case where $\alpha_i = 0$, that is the weight on social motives is zero. Then,

$$\left. \frac{\partial d_i^*}{\partial d_{-i}} \right|_{\alpha_i=0} = - \frac{\frac{\partial^2 g(d_i, d_{-i})}{\partial d_i \partial d_{-i}}}{\frac{\partial^2 g(d_i, d_{-i})}{\partial d_i \partial d_i} - \frac{\partial^2 c(d_i)}{\partial d_i \partial d_i}} < 0. \quad (7)$$

In the case where $\alpha_i = 1$,

$$\left. \frac{\partial d_i^*}{\partial d_{-i}} \right|_{\alpha_i=1} = - \frac{\frac{\partial^2 h(d_i, d_{-i})}{\partial d_i \partial d_{-i}}}{\frac{\partial^2 h(d_i, d_{-i})}{\partial d_i \partial d_i} - \frac{\partial^2 c(d_i)}{\partial d_i \partial d_i}} > 0. \quad (8)$$

As $\frac{\partial d_i^*}{\partial d_{-i}}$ is continuous in α_i , we can draw two conclusions. There exists a cutoff-level $\underline{\alpha}_i$ such that individuals with $\alpha_i < \underline{\alpha}_i$ exhibit strategic substitutability. Vice versa, there

exists a cutoff-level $\bar{\alpha}_i$ such that individuals with $\alpha_i > \bar{\alpha}_i$ exhibit strategic complementarity.

Next, we consider extensive margin responses. Note that for each individual of type i there exists a cutoff value $\tilde{c}_i^* = (1 - \alpha_i)g(d_i^*, d_{-i}) + \alpha_i h(d_i^*, d_{-i}) - c_i(d_i^*) - (1 - \alpha_i)g(0, d_{-i})$ such that the individual chooses to engage in canvassing iff $\tilde{c}_i \leq \tilde{c}_i^*$. Hence, the fraction of individuals of type i deciding to engage in canvassing is equal to

$$F\left((1 - \alpha_i)g(d_i^*, d_{-i}) + \alpha_i h(d_i^*, d_{-i}) - c_i(d_i^*) - (1 - \alpha_i)g(0, d_{-i})\right). \quad (9)$$

Taking the derivative with respect to d_{-i} yields

$$\left((1 - \alpha_i)\left(\frac{\partial g(d_i^*, d_{-i})}{\partial d_{-i}} - \frac{\partial g(0, d_{-i})}{\partial d_{-i}}\right) + \alpha_i \frac{\partial h(d_i^*, d_{-i})}{\partial d_{-i}}\right) \cdot f(\tilde{c}_i^*). \quad (10)$$

Given g is concave in d_i , $\frac{\partial g(d_i^*, d_{-i})}{\partial d_{-i}} - \frac{\partial g(0, d_{-i})}{\partial d_{-i}}$ will be unambiguously negative. Hence, for low α_i the above term will be negative. If we assume $\frac{h(d_i, d_{-i})}{\partial d_{-i}} \geq 0$, i.e. social utility increases in the participation of others, reflecting the quality of canvassing as a relational good, the sign of the effect is ambiguous and depends on the relative strength of social motives α_i . Most importantly, however, extensive margin responses depend critically on the mass of individuals $f(\tilde{c}_i^*)$ who are marginal. Hence, we expect the relative strength of intensive and extensive margin responses to depend on the degree of how many individuals are marginal in their decision to do any canvassing. Aggregating over all individuals yields

$$\int_{i \in I} \left((1 - \alpha_i)\left(\frac{\partial g(d_i^*, d_{-i})}{\partial d_{-i}} - \frac{\partial g(0, d_{-i})}{\partial d_{-i}}\right) + \alpha_i \frac{\partial h(d_i^*, d_{-i})}{\partial d_{-i}}\right) \cdot f(\tilde{c}_i^*) d\Phi. \quad (11)$$

B Invitation email

Dear 'name',

the critical stage of the election campaign is imminent. We have conducted workshops in almost all constituencies and the feedback was resoundingly positive. Now it's up to us. We are all out to canvass to help [party name] win the election.

To help our campaign succeed, we ask you to respond to a short survey. We would like to know if you have any suggestions and to what extent you plan to participate in the campaign. Your answers will of course be treated confidentially.

Here is the link to the survey:

Survey

It would be great if you could support us with this survey. Just click on the link right now. The survey only takes five minutes.

C Survey instruments

C.1 Main survey

- **Introduction**

Dear 'name',

we are conducting a short survey among our supporters to plan our election campaign. Your participation helps us to use our campaign resources optimally. We will treat your answers confidentially. The survey only takes 5 minutes (10 questions).

Thank you very much for your help!

- **Sex**

What is your sex?

- **Age**

How old are you?

- **Party member**

Are you a member of [party name] party?

- **Years of party membership** (asked if respondent is party member)

For how many years have you been a member of [party name] party?

- **Canvassing workshop**

Have you ever participated in a canvassing training workshop?

- **Canvassing experience**

Do you have experiences from canvassing in previous election campaigns?

- **Pre-treatment belief**

Think of 100 typical [party name] party members.

What do you think: How many of these 100 [party name] party members plan to engage in canvassing during this election campaign?

- **Treatment text**

You said X of 100 [party name] party members.

According to a survey of [party name] party members, 37 of 100 [party name] party members plan to engage in canvassing during this election campaign.

- **Post-treatment belief**

What do you think: How many of these 100 [party name] party members will actually engage in canvassing during this election campaign?

- **Extensive margin**

Do you plan to canvass during this election campaign?

- **Intensive margin** (asked if extensive margin is yes)

On how many days do you plan to canvass during this election campaign?

- **Debrief**

Now let's go! And don't forget to download the [party name]-application. Here for [iOS](#) and [Android](#).

With the [party name]-application you can actively participate in our election campaign and keep up to date with the campaign progress. Also, the application is fun!

D Deviations from pre-analysis plan

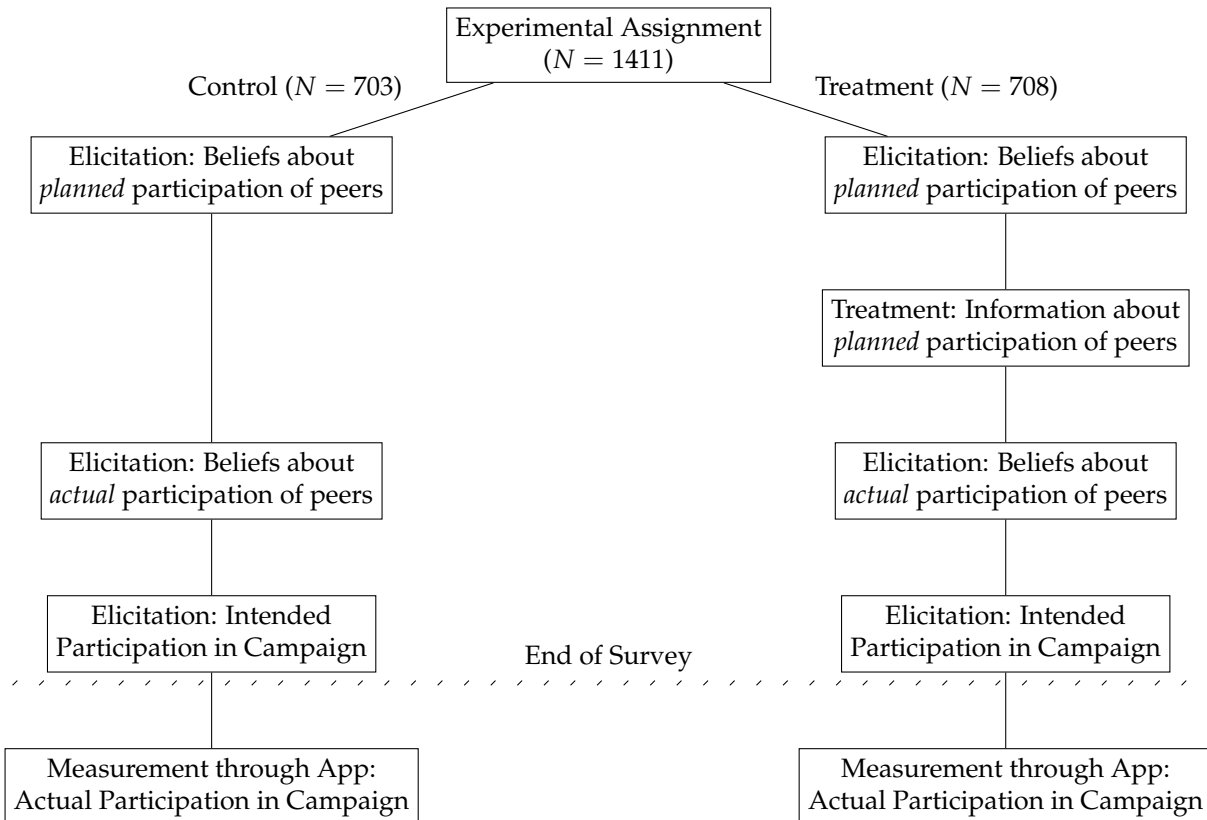
This section describes where the analysis presented in the paper deviates from the pre-analysis plan uploaded to the AEA RCT registry (AEARCTR-0002358). The pre-analysis plan contains pre-registered analyses for two separate experiments (“own party” and “other party” group). We present the results of these experiments in two different papers. This paper describes the results of the “own party” experiment. The results of the “other party” group are presented in Hager et al. (2021) which is available upon request from the authors.

For the analysis of the experiment presented in this paper, we deviated in the following points from the pre-analysis plan:

- We conduct additional analysis not covered in the pre-analysis plan. This includes the following analysis:
 - Any analysis of temporal patterns of treatment effects, including the impacts on any canvassing, doors, and days in week 7/8. We also construct an index using these variables.
 - Heterogeneity by strength of connection to the party (PCA of three pre-specified control variables).
 - The impact of the treatment on social media campaigning.
 - An IV-analysis instrumenting post-treatment beliefs with treatment assignment.

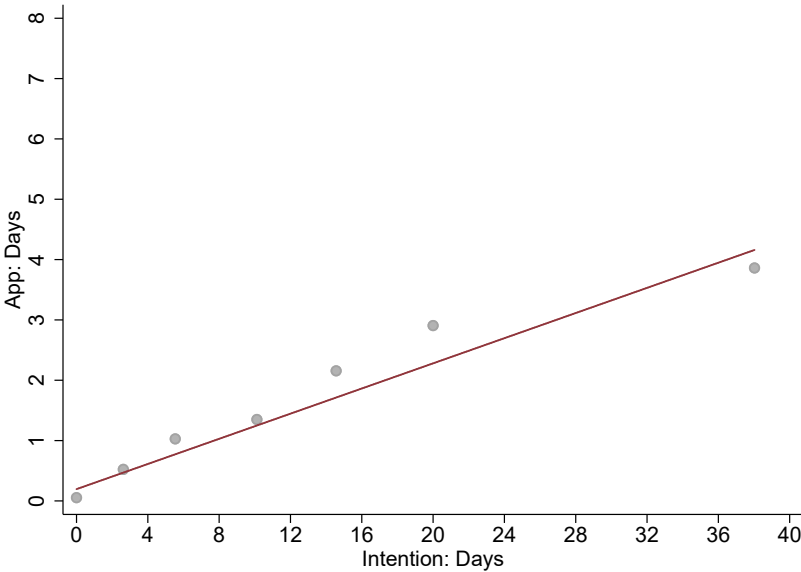
E Online Appendix Figures

Figure A1: Experimental design



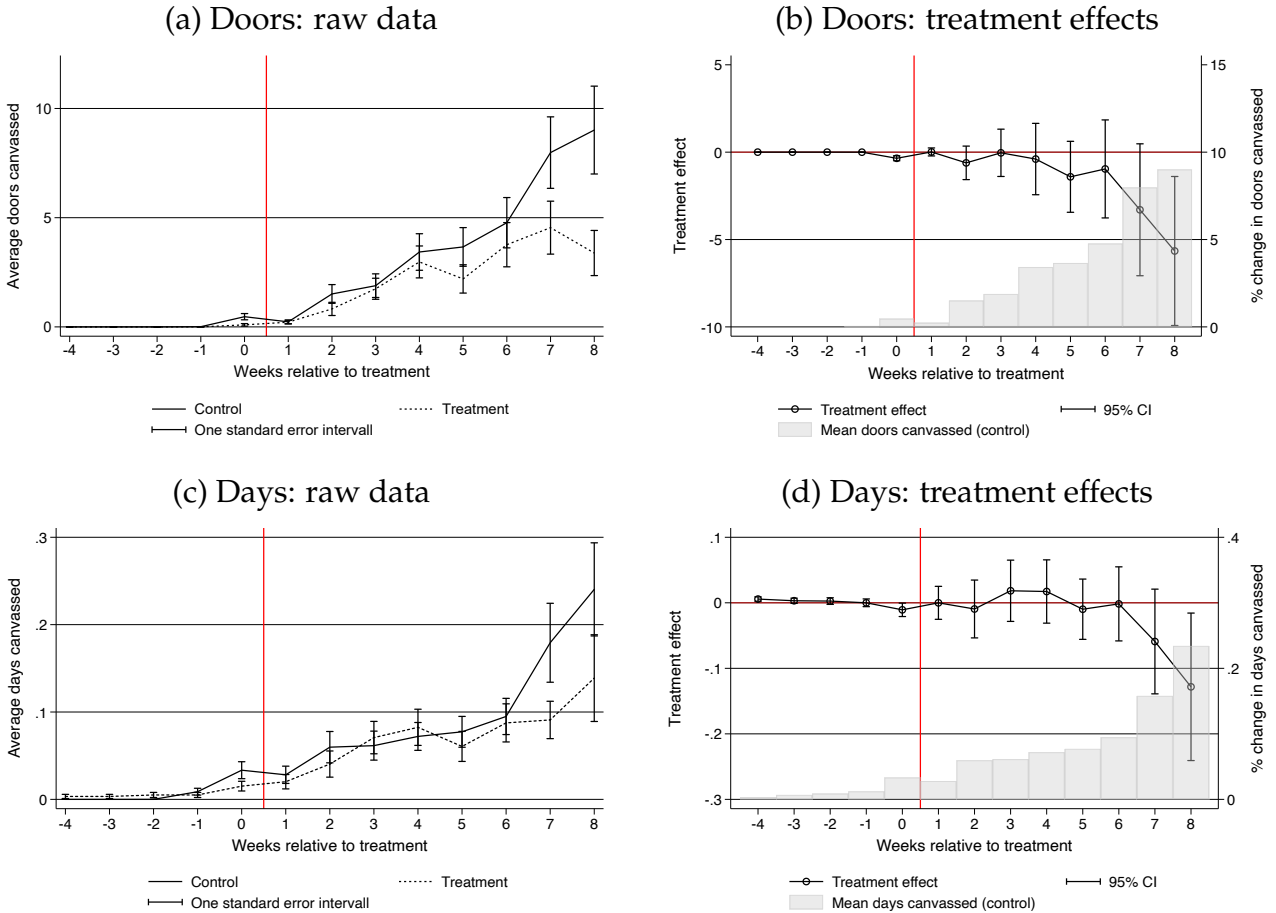
Notes: Figure A1 illustrates the experimental design.

Figure A2: Intentions vs. behavior (data from survey and online application)



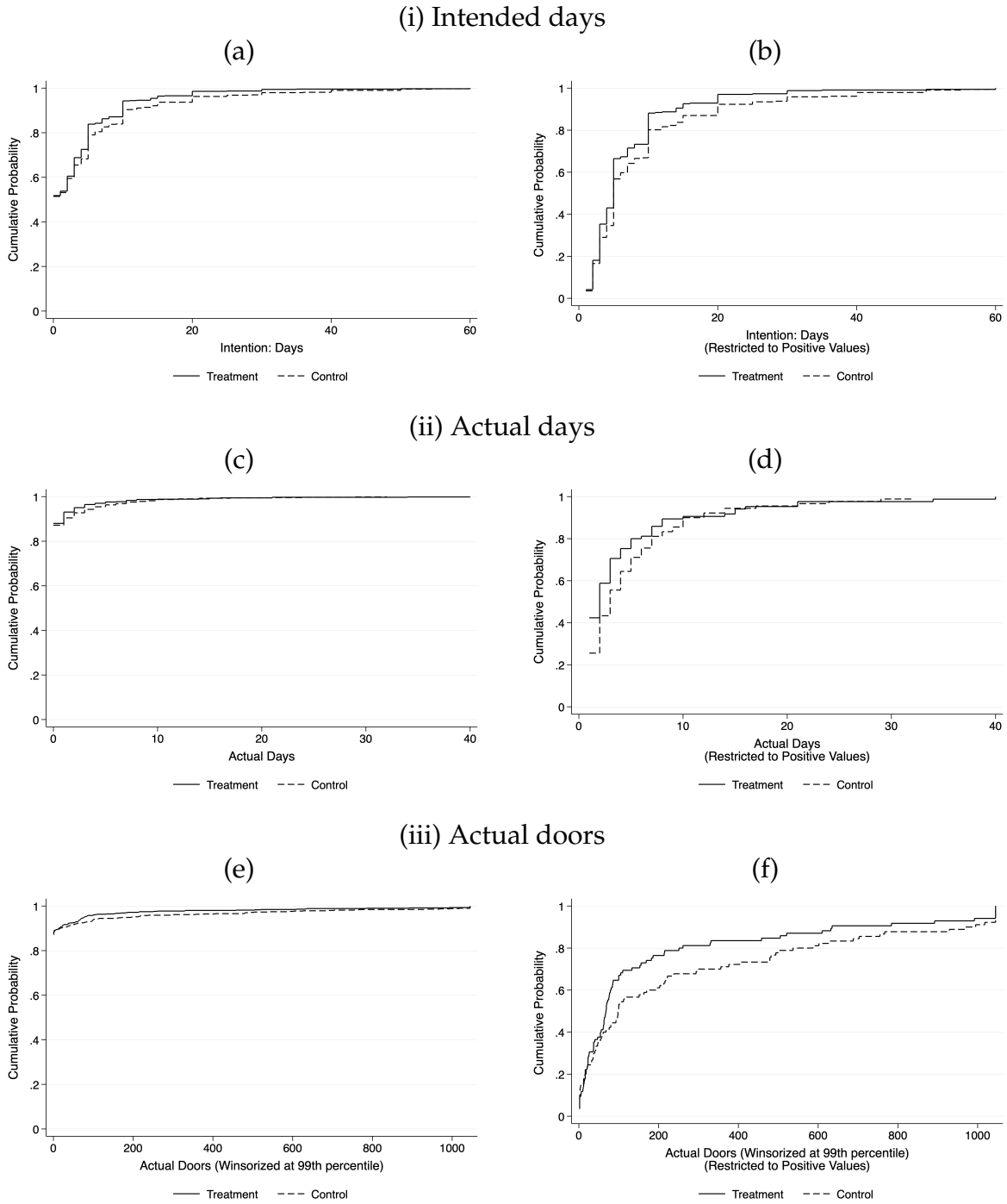
Notes: Figure A2 shows a binscatter plot between intended number of days and number of days canvassing as recorded through the online application. The regression line indicates the best linear fit.

Figure A3: Doors and days canvassed over time



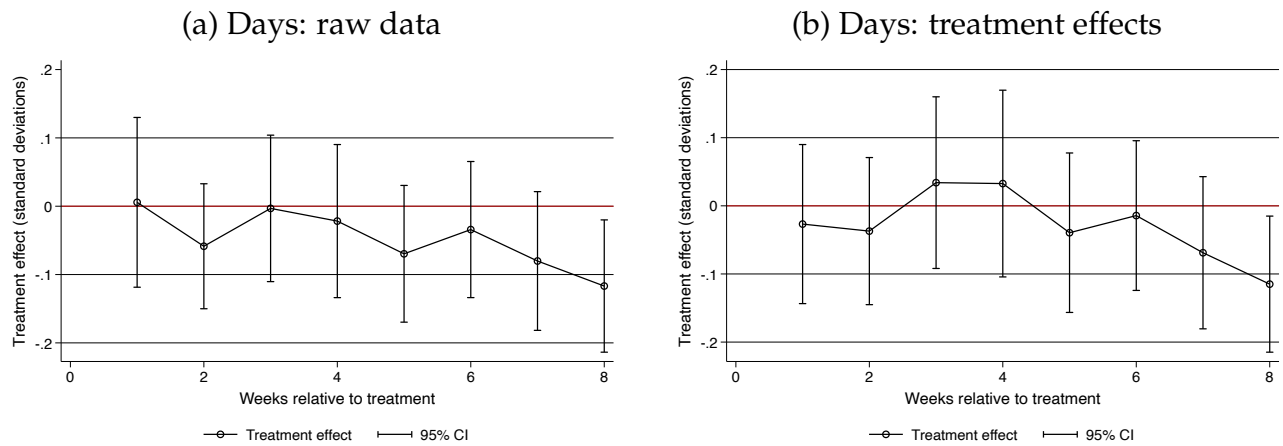
Notes: Figure A3 (a) shows the average number of doors canvassed (winsorized at the 99th percentile) for each week after the treatment. Figure A3 (b) plots the estimates of treatment effects on doors canvassed (winsorized at the 99th percentile) for each week after the treatment. Estimates are obtained by estimating equation (1) separately for each week after the treatment. All results are normalized with respect to the effect in week -1. Pre-specified control variables include: party membership, number of years of party membership, age, sex, whether a participant has participated in a canvassing training, whether a participant has already downloaded the online application, whether a participant has participated in canvassing before this federal election and whether a participant has participated in canvassing for this federal election. Shaded bars indicate the average number of doors knocked on in the control group in a given week after the survey. Vertical red lines indicate the timing of treatment. The sample in both figures is restricted to respondents who underestimate the share of fellow party members who plan to participate in the party's door-to-door canvassing campaign. Figures A3 (c) and (d) present analogous evidence for days canvassed.

Figure A4: Cumulative distribution function of key outcomes



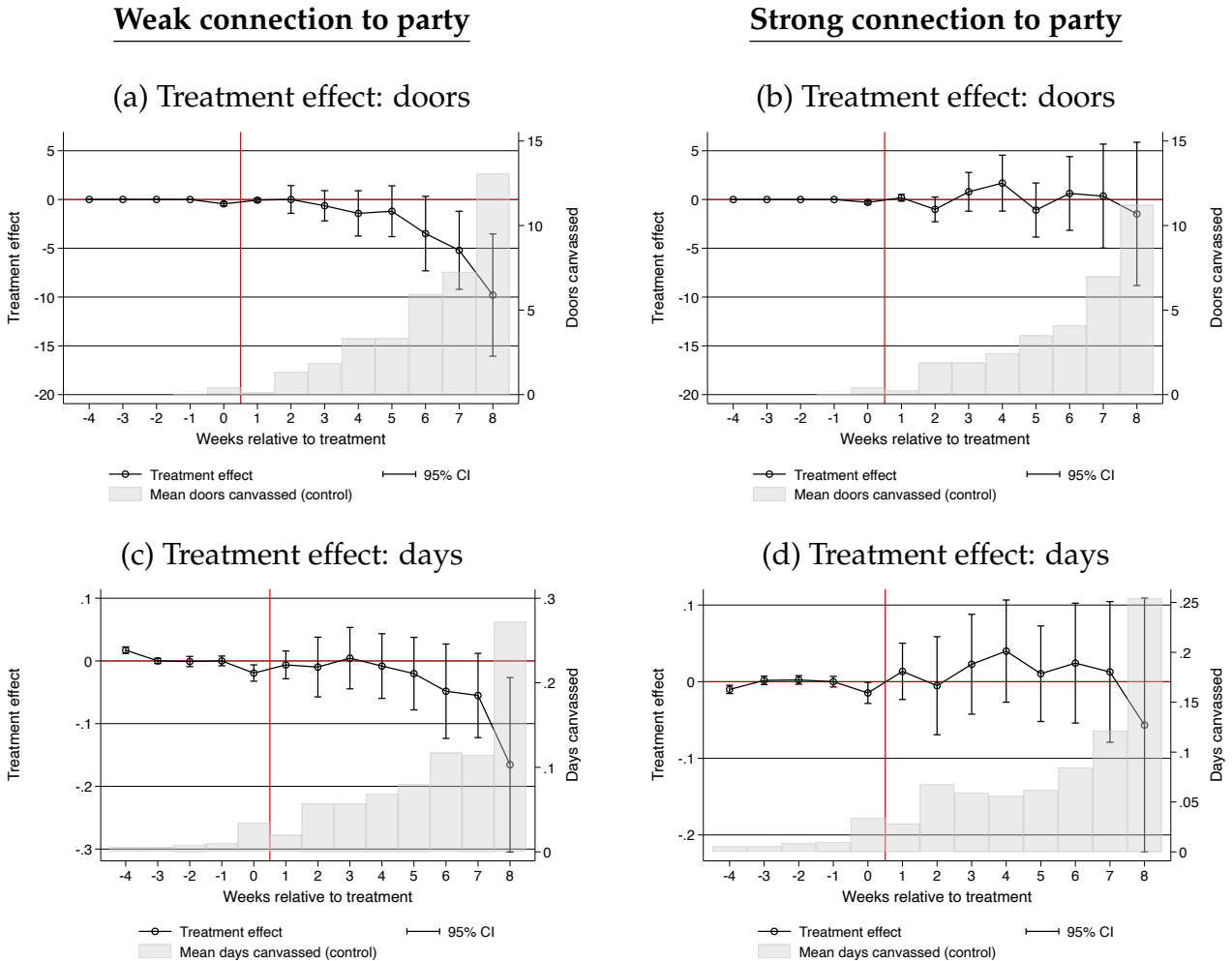
Notes: Figures A4 a-f show cumulative distribution functions (cdfs) of three key outcomes: (i) intended days canvassing, (ii) actual days canvassing, (iii) actual doors knocked on (winsorized at 99th percentile). Panels (a), (c), and (e) show the distribution for all observations, panels (b), (d), and (f) show the distribution for positive observations only.

Figure A5: Doors and days canvassed over time (standardized outcomes)



Notes: Figure A5 (a) plots the estimates of treatment effects on the standardized number of doors canvassed (winsorized at the 99th percentile) for each week after the treatment. Figures A5 (b) present analogous evidence for days canvassed. Estimates are obtained by estimating equation (1) separately for each week after the treatment. Pre-specified control variables are included.

Figure A6: Treatment effects over time by connection to the party



Notes: Figure A6 shows treatment effects over time separately for respondents with below median social connections to the party (panels (a) and (c)) and above median social connections to the party (panels (b) and (d)). The measure for strength of connection to the party is the first principal component of three pre-specified dimensions of heterogeneity (previous canvassing experience, party membership and party membership duration). Figures A6 (a) and (b) plot the estimates of treatment effects on doors canvassed (winsorized at the 99th percentile) for each week after the treatment. Figures A6 (c) and (d) present analogous evidence for days canvassed. The sample in all figures is restricted to respondents who underestimate the share of fellow party members who plan to participate in the party’s door-to-door canvassing campaign. All estimates are obtained by estimating equation (1) separately for each week after the treatment. All results are normalized with respect to the effect in week -1. Pre-specified controls are as defined in Figure A3. Shaded bars indicate the average number of doors knocked on in the control group in a given week after the survey. Vertical red lines indicate the timing of treatment.

F Online Appendix Tables

Table A1: Summary statistics

| | Mean | SD | Median | Min. | Max. | Obs. |
|---------------------------------------|-------|--------|--------|-------|---------|------|
| <u>Predetermined variables</u> | | | | | | |
| Female | 0.24 | 0.43 | 0.00 | 0.00 | 1.00 | 1411 |
| Age | 41.04 | 19.30 | 36.00 | 16.00 | 100.00 | 1411 |
| Social ties to party (z-scored) | -0.00 | 1.00 | -0.06 | -1.76 | 2.42 | 1411 |
| Is party member | 0.83 | 0.38 | 1.00 | 0.00 | 1.00 | 1411 |
| Years of party membership | 12.19 | 14.22 | 6.00 | 0.00 | 60.00 | 1411 |
| Has experience canvassing | 0.38 | 0.48 | 0.00 | 0.00 | 1.00 | 1411 |
| Participated in door-to-door workshop | 0.21 | 0.41 | 0.00 | 0.00 | 1.00 | 1411 |
| Downloaded app before survey | 0.27 | 0.44 | 0.00 | 0.00 | 1.00 | 1411 |
| Has canvassed before survey | 0.08 | 0.27 | 0.00 | 0.00 | 1.00 | 1411 |
| Days canvassed before survey | 0.19 | 0.96 | 0.00 | 0.00 | 16.00 | 1411 |
| Doors visited before survey | 4.38 | 41.80 | 0.00 | 0.00 | 1071.00 | 1411 |
| <u>Intention outcomes</u> | | | | | | |
| Canvassing: yes | 0.49 | 0.50 | 0.00 | 0.00 | 1.00 | 1395 |
| Canvassing: days | 3.85 | 7.33 | 0.00 | 0.00 | 60.00 | 1395 |
| <u>Behavioral outcomes</u> | | | | | | |
| Has canvassed after survey | 0.12 | 0.33 | 0.00 | 0.00 | 1.00 | 1411 |
| Days canvassed after survey | 0.59 | 2.70 | 0.00 | 0.00 | 40.00 | 1411 |
| Doors canvassed after survey | 29.22 | 137.57 | 0.00 | 0.00 | 1045.00 | 1411 |

Notes: Table A1 presents summary statistics for the full sample.

Table A2: Balance tests

| | Treatment | Control | Δ | se(Δ) | p($\Delta=0$) |
|--|-----------|---------|----------|----------------|-----------------|
| Female | 0.229 | 0.245 | -0.016 | (0.023) | 0.484 |
| Age | 40.274 | 41.805 | -1.532 | (1.027) | 0.136 |
| Is party member | 0.821 | 0.832 | -0.012 | (0.020) | 0.568 |
| Years of party membership | 11.731 | 12.654 | -0.922 | (0.757) | 0.223 |
| Has experience canvassing | 0.384 | 0.371 | 0.013 | (0.026) | 0.617 |
| Participated in door-to-door workshop | 0.201 | 0.220 | -0.020 | (0.022) | 0.359 |
| Downloaded app before survey | 0.287 | 0.256 | 0.031 | (0.024) | 0.195 |
| Has canvassed before survey | 0.081 | 0.078 | 0.002 | (0.014) | 0.875 |
| Days canvassed before survey | 0.185 | 0.203 | -0.018 | (0.051) | 0.719 |
| Doors visited before survey | 3.192 | 5.576 | -2.384 | (2.229) | 0.285 |
| Prior Belief: % of party members who canvass | 19.860 | 20.727 | -0.867 | (1.123) | 0.440 |
| Number of observations | 708 | 703 | | | |

Notes: Table A2 presents balance tests for the treatment and control group in our experiment. Columns 1 and 2 report variable means. Column 3 reports difference in means. Column 4 reports the associated heteroskedasticity robust standard error. Column 5 the p-value of a test of equality of means. We regress the treatment indicator on all covariates to test for joint significance. The p-value of this joint F-test is 0.55.

Table A3: Treatment effects on application download

| | Survey | App Data | | |
|--------------------|-------------------|------------------|-------------------|-----------------------|
| | click on app-link | within 24h | within one week | any time after survey |
| Treatment | -0.005 (0.011) | 0.006 (0.008) | -0.004 (0.009) | 0.004 (0.012) |
| Observations | 1411 | 1411 | 1411 | 1411 |
| Control group mean | 0.05 | 0.02 | 0.03 | 0.06 |

Notes: Table A3 presents treatment effects on application download. Pre-specified controls are as defined in Table 1.

Table A4: Selection into app download

| | Intends canvassing | App download |
|---------------------|----------------------|----------------------|
| Female | -0.066* (0.040) | -0.107*** (0.035) |
| Age | -0.005*** (0.001) | -0.005*** (0.001) |
| Party member | 0.131*** (0.047) | 0.202*** (0.043) |
| Membership duration | -0.003* (0.002) | -0.003** (0.001) |
| Canv. experience | 0.241*** (0.037) | 0.061* (0.036) |
| Canv. workshop | 0.361*** (0.039) | 0.379*** (0.042) |
| Overestimator | 0.100** (0.041) | 0.096** (0.042) |
| Control mean | 0.487 | 0.333 |
| Observations | 696 | 703 |

Notes: Table A4 presents a regression of intention to canvass and application download on covariates measured in the experimental survey. Sample is restricted to control group supporters.

Table A5: Estimation results with alternative treatment definition

| | Belief | Intentions | | App Data | | | App Data: Week 7/8 | | | Index | |
|--|----------------------|---------------------|----------------------|-------------------|-------------------|-------------------|--------------------|-------------------|-------------------|---------------------|----------------------|
| | % canvassing | Any | Days | Any | Days | Doors | Any | Days | Doors | Overall | Week 7/8 |
| Panel A: Pooled treatment effects | | | | | | | | | | | |
| Treatment | -4.195*** (0.539) | -0.009 (0.019) | -1.230*** (0.323) | -0.013 (0.012) | -0.001 (0.109) | -1.811 (4.922) | -0.020* (0.010) | -0.047 (0.036) | -1.969 (1.597) | -0.063* (0.033) | -0.089*** (0.031) |
| Panel B: Interaction with strength of connection to the party | | | | | | | | | | | |
| Treatment | -4.125*** (0.555) | -0.007 (0.019) | -1.233*** (0.335) | -0.012 (0.012) | -0.001 (0.113) | -1.456 (5.037) | -0.019* (0.011) | -0.046 (0.037) | -1.829 (1.638) | -0.062* (0.034) | -0.087*** (0.032) |
| Treatment × Strength of connection to party (PCA) | 0.781 (0.597) | 0.015 (0.018) | -0.025 (0.325) | 0.004 (0.010) | -0.005 (0.075) | 4.008 (3.714) | 0.015* (0.009) | 0.012 (0.029) | 1.583 (1.146) | 0.017 (0.028) | 0.031 (0.028) |
| Strength of connection to party (PCA) | -2.265** (1.061) | 0.280*** (0.033) | 1.698*** (0.559) | -0.002 (0.021) | -0.056 (0.196) | -5.520 (9.899) | -0.001 (0.019) | -0.040 (0.080) | -2.540 (3.448) | 0.197*** (0.061) | 0.192*** (0.062) |
| Control mean | 16.039 | 0.487 | 4.361 | 0.128 | 0.651 | 35.330 | 0.085 | 0.263 | 12.144 | -0.017 | -0.004 |
| Observations | 1397 | 1395 | 1395 | 1411 | 1411 | 1411 | 1411 | 1411 | 1411 | 1395 | 1395 |

Notes: Table A5 presents treatment effects for respondents who underestimate the share of fellow party members who plan to participate in the party's door-to-door canvassing campaign for the pooled sample of treatment effects. The treatment variable is defined as 1 for treated underestimators, -1 for treated overestimators, and 0 for control respondents. Outcomes are as defined in Table 1. All regressions include pre-specified controls and a dummy indicating overestimators.

Table A6: Predictors of relationship components of the connection to the party measure

| | Strength of connection to party (PCA) | | | | | | | | Party membership duration | | | | | | | | Has experience canvassing | | | |
|-------------------------------|---------------------------------------|---------------------|----------------------|----------------------|---------------------|---------------------|----------------------|---------------------|---------------------------|--------------------|-----------------------|----------------------|---------------------|--------------------|----------------------|----------------------|---------------------------|--|--|--|
| | (1) | (2) | (3) | (4) | (5) | (6) | (7) | (8) | (9) | (10) | (11) | (12) | (13) | (14) | (15) | (16) | | | | |
| Number of know members (z) | 0.384*** (0.030) | | | 0.308*** (0.033) | 0.096*** (0.010) | | | 0.083*** (0.011) | 4.788*** (0.518) | | | 3.248*** (0.560) | 0.146*** (0.017) | | | 0.128*** (0.018) | | | | |
| Identification with party (z) | | 0.135*** (0.042) | | 0.083*** (0.038) | | 0.071*** (0.015) | | 0.058*** (0.015) | | 1.263** (0.569) | | 0.596 (0.507) | | 0.039** (0.018) | | 0.019 (0.018) | | | | |
| Has career concerns | | | -0.647*** (0.068) | -0.427*** (0.070) | | | -0.081*** (0.023) | -0.027 (0.024) | | | -11.433*** (1.000) | -9.181*** (1.080) | | | -0.194*** (0.034) | -0.102*** (0.036) | | | | |
| Control Observations | 731 | 729 | 720 | 720 | 810 | 808 | 799 | 799 | 740 | 738 | 729 | 729 | 808 | 806 | 797 | 797 | | | | |

Notes: Table A6 presents the correlations between social connections, party identification, and a dummy indicating career concerns within the party with the proxy for strength to the connection with the party and its components. All independent variables are standardized. Columns (1) to (4) study the correlation with the first principal component of the three pre-specified dimensions of heterogeneity (canvassing experience prior to the federal election, party membership dummy, and party membership duration). Columns (5) to (8) study the correlation with party membership status. Columns (9) to (12) study the correlation with party membership duration. Columns (13) to (16) study the correlation with canvassing experience prior to the federal election. * $p < 0.10$, ** $p < 0.05$, *** $p < 0.01$

Table A7: Treatment effects by canvassing experience

| | Posterior | Intentions | | App Data | | | App Data: Week 7/8 | | | Index | |
|--|---------------------|-------------------|----------------------|-------------------|--------------------|-----------------------|----------------------|----------------------|-----------------------|----------------------|----------------------|
| | Belief | Any | Days | Any | Days | Doors | Any | Days | Doors | Overall | Week 7/8 |
| Panel A: Inexperienced supporters | | | | | | | | | | | |
| Treatment | 0.175 (0.815) | -0.023 (0.029) | -1.406*** (0.434) | -0.017 (0.017) | -0.282* (0.146) | -22.451*** (8.261) | -0.041*** (0.015) | -0.182*** (0.065) | -10.118*** (3.027) | -0.147*** (0.050) | -0.195*** (0.052) |
| Control mean | 17.736 | 0.390 | 3.751 | 0.109 | 0.586 | 34.120 | 0.081 | 0.258 | 12.586 | -0.116 | -0.081 |
| Observations | 869 | 868 | 868 | 878 | 878 | 878 | 878 | 878 | 878 | 868 | 868 |
| Panel B: Experienced supporters | | | | | | | | | | | |
| Treatment | 2.848*** (0.872) | -0.001 (0.038) | -0.546 (0.645) | -0.009 (0.026) | 0.119 (0.283) | 3.576 (12.720) | 0.008 (0.023) | -0.009 (0.098) | 1.473 (4.309) | -0.011 (0.078) | -0.009 (0.076) |
| Control mean | 13.162 | 0.651 | 5.395 | 0.161 | 0.762 | 37.379 | 0.092 | 0.272 | 11.395 | 0.150 | 0.127 |
| Observations | 528 | 527 | 527 | 533 | 533 | 533 | 533 | 533 | 533 | 527 | 527 |

Notes: Table A7 presents treatment effects by previous canvassing experience. Panel A contains the sample of supporters without previous canvassing experience, Panel B contains the sample of supporters with previous canvassing experience. Outcomes and pre-specified controls are as defined in Table 1. * $p < 0.10$, ** $p < 0.05$, *** $p < 0.01$

Table A8: Treatment effects by party membership

| | Posterior | Intentions | | App Data | | | App Data: Week 7/8 | | | Index | |
|---------------------------------|---------------------|-------------------|----------------------|-------------------|--------------------|-----------------------|--------------------|---------------------|---------------------|----------------------|---------------------|
| | Belief | Any | Days | Any | Days | Doors | Any | Days | Doors | Overall | Week 7/8 |
| Panel A: No party member | | | | | | | | | | | |
| Treatment | -5.206** (2.118) | -0.043 (0.053) | -3.261*** (0.935) | -0.038 (0.027) | -0.380* (0.203) | -32.306** (14.570) | -0.016 (0.025) | -0.092 (0.089) | -7.551* (4.367) | -0.268*** (0.084) | -0.214** (0.083) |
| Control mean | 24.353 | 0.417 | 5.348 | 0.102 | 0.551 | 42.847 | 0.068 | 0.161 | 10.364 | -0.033 | -0.054 |
| Observations | 241 | 240 | 240 | 245 | 245 | 245 | 245 | 245 | 245 | 240 | 240 |
| Panel B: Party member | | | | | | | | | | | |
| Treatment | 2.673*** (0.585) | -0.004 (0.026) | -0.565 (0.410) | -0.009 (0.017) | -0.093 (0.162) | -9.073 (7.734) | -0.025* (0.015) | -0.128** (0.064) | -5.681** (2.829) | -0.058 (0.048) | -0.107** (0.049) |
| Control mean | 21.094 | 0.471 | 4.712 | 0.105 | 0.500 | 38.099 | 0.070 | 0.215 | 11.506 | -0.041 | -0.030 |
| Observations | 1156 | 1155 | 1155 | 1166 | 1166 | 1166 | 1166 | 1166 | 1166 | 1155 | 1155 |

Notes: Table A8 presents treatment effects by party membership. Panel A contains the sample of non-party members, Panel B contains the sample of party members. Outcomes and pre-specified controls are as defined in Table 1. * $p < 0.10$, ** $p < 0.05$, *** $p < 0.01$

Table A9: Treatment effects by party membership duration

| | Posterior | Intentions | | App Data | | | App Data: Week 7/8 | | | Index | |
|--|---------------------|-------------------|----------------------|-------------------|-------------------|-----------------------|---------------------|---------------------|---------------------|----------------------|----------------------|
| | Belief | Any | Days | Any | Days | Doors | Any | Days | Doors | Overall | Week 7/8 |
| Panel A: Below med. membership dur. | | | | | | | | | | | |
| Treatment | -0.739 (0.948) | -0.046 (0.032) | -1.704*** (0.532) | -0.014 (0.022) | -0.197 (0.188) | -22.101** (11.148) | -0.043** (0.020) | -0.163** (0.073) | -8.482** (3.579) | -0.159*** (0.062) | -0.209*** (0.061) |
| Control mean | 18.428 | 0.530 | 5.009 | 0.151 | 0.761 | 47.028 | 0.111 | 0.304 | 14.517 | 0.081 | 0.089 |
| Observations | 705 | 704 | 704 | 713 | 713 | 713 | 713 | 713 | 713 | 704 | 704 |
| Panel B: Above med. membership dur. | | | | | | | | | | | |
| Treatment | 3.342*** (0.741) | 0.026 (0.033) | -0.253 (0.516) | -0.019 (0.019) | -0.123 (0.192) | -6.273 (7.900) | -0.006 (0.017) | -0.087 (0.083) | -3.750 (3.351) | -0.035 (0.057) | -0.041 (0.061) |
| Control mean | 13.663 | 0.444 | 3.716 | 0.105 | 0.541 | 23.598 | 0.060 | 0.222 | 9.764 | -0.115 | -0.097 |
| Observations | 692 | 691 | 691 | 698 | 698 | 698 | 698 | 698 | 698 | 691 | 691 |

Notes: Table A9 by party membership duration. Panel A contains the sample of supporters who have a below median party membership duration (including non-members), Panel B contains the sample of supporters who have above median membership duration. Outcomes and pre-specified controls are as defined in Table 1. * $p < 0.10$, ** $p < 0.05$, *** $p < 0.01$

Table A10: Treatment effects and strength of connection to the party - controlling for treatment interaction with covariates

| | Posterior | Intentions | | App Data | | | App Data: Week 7/8 | | | Index | |
|---|----------------------|---------------------|----------------------|-------------------|-------------------|---------------------|--------------------|---------------------|---------------------|---------------------|----------------------|
| | Belief | Any | Days | Any | Days | Doors | Any | Days | Doors | Overall | Week 7/8 |
| Treatment | 1.256** (0.560) | -0.007 (0.024) | -0.996*** (0.365) | -0.015 (0.014) | -0.147 (0.136) | -13.367* (6.890) | -0.023* (0.013) | -0.121** (0.055) | -6.042** (2.448) | -0.092** (0.042) | -0.121*** (0.043) |
| Treatment × Strength of connection to party (PCA) | 0.927 (0.856) | 0.002 (0.028) | 0.995** (0.446) | 0.021 (0.015) | 0.194 (0.159) | 16.174** (8.066) | 0.016 (0.015) | 0.024 (0.068) | 4.663* (2.542) | 0.102** (0.049) | 0.080 (0.050) |
| Strength of connection to party (PCA) | -2.520*** (0.686) | 0.092*** (0.020) | -0.073 (0.385) | -0.002 (0.011) | -0.048 (0.137) | -9.209 (6.581) | -0.003 (0.011) | 0.019 (0.063) | -2.081 (2.212) | 0.025 (0.039) | 0.040 (0.042) |
| Control mean | 16.039 | 0.487 | 4.361 | 0.128 | 0.651 | 35.330 | 0.085 | 0.263 | 12.144 | -0.017 | -0.004 |
| Observations | 1397 | 1395 | 1395 | 1411 | 1411 | 1411 | 1411 | 1411 | 1411 | 1395 | 1395 |

Notes: Table A10 presents treatment effects interacted with a summary measure of connectedness to the party for respondents who underestimate the share of fellow party members who plan to participate in the party's door-to-door canvassing campaign. The measure for strength of connection to the party is the first principal component of three pre-specified dimensions of heterogeneity (previous canvassing experience, party membership and party membership duration). This summary measure is standardized to have mean zero and standard deviation one. Outcomes and pre-specified controls are as defined in Table 1. The regressions also control for interaction terms between standardized covariates and the treatment dummy (excluding the components of connectedness measure). * $p < 0.10$, ** $p < 0.05$, *** $p < 0.01$

Table A11: Treatment effects by local canvassing activity

| | Belief | Intentions | | App Data | | | App Data: Week 7/8 | | | Index | |
|------------------------------------|-------------------|------------------|--------------------|--------------------|--------------------|-----------------------|--------------------|--------------------|-----------------------|---------------------|---------------------|
| | % canvassing | Any | Days | Any | Days | Doors | Any | Days | Doors | Overall | Week 7/8 |
| Treatment | 1.785* (0.984) | 0.001 (0.039) | -1.467* (0.827) | -0.016 (0.045) | -0.272 (0.440) | -33.431 (21.799) | -0.057 (0.041) | -0.320* (0.172) | -14.575* (7.552) | -0.157 (0.119) | -0.254** (0.121) |
| Treatment × Local doors (z-scored) | -0.439 (0.823) | 0.002 (0.036) | -1.129 (0.880) | 0.002 (0.048) | -0.703 (0.525) | -55.705* (29.254) | -0.048 (0.045) | -0.430* (0.240) | -23.378* (11.939) | -0.206 (0.145) | -0.296* (0.162) |
| Local doors (z-scored) | -0.289 (0.522) | 0.020 (0.025) | 0.728 (0.786) | 0.083** (0.037) | 0.988** (0.467) | 81.202*** (26.089) | 0.082** (0.034) | 0.498** (0.229) | 31.483*** (10.977) | 0.344*** (0.122) | 0.382*** (0.144) |
| Control mean | 16.559 | 0.782 | 7.627 | 0.405 | 2.063 | 111.878 | 0.270 | 0.833 | 38.455 | 0.759 | 0.713 |
| Observations | 426 | 426 | 426 | 427 | 427 | 427 | 427 | 427 | 427 | 426 | 426 |

Notes: Table A11 presents treatment effects by doors canvassed locally. The measure of total doors canvassed locally includes all doors canvassed in the locality of a given respondent excluding that respondent's own doors. This measure is winsorized at the 99th percentile. Sample is restricted to respondents who downloaded the application for whom we observe their locality as recorded during the sign up for the application. Outcomes and pre-specified controls are as defined in Table 1. * $p < 0.10$, ** $p < 0.05$, *** $p < 0.01$

Table A12: Treatment effects by local cohesion

| | Belief | Intentions | | App Data | | | App Data: Week 7/8 | | | Index | |
|---------------------------------------|-------------------|-------------------|---------------------|--------------------|-------------------|----------------------|--------------------|---------------------|----------------------|--------------------|----------------------|
| | % canvassing | Any | Days | Any | Days | Doors | Any | Days | Doors | Overall | Week 7/8 |
| Treatment | 1.192 (1.023) | -0.003 (0.039) | -1.926** (0.875) | -0.016 (0.046) | -0.442 (0.463) | -41.128* (23.283) | -0.064 (0.041) | -0.412** (0.189) | -20.767** (8.187) | -0.209* (0.126) | -0.336*** (0.130) |
| Treatment × Local cohesion (z-scored) | -1.661 (1.362) | 0.053 (0.050) | 0.610 (1.042) | 0.146** (0.063) | 0.839 (0.639) | 35.227 (25.998) | 0.105* (0.062) | 0.288 (0.252) | 18.625* (10.531) | 0.313* (0.162) | 0.310* (0.175) |
| Local cohesion (z-scored) | 0.936 (0.878) | -0.012 (0.037) | -0.036 (0.903) | -0.066 (0.043) | -0.278 (0.437) | -18.802 (19.908) | -0.025 (0.043) | -0.059 (0.212) | -8.325 (9.151) | -0.123 (0.120) | -0.087 (0.142) |
| Control mean | 17.584 | 0.797 | 8.025 | 0.412 | 2.211 | 118.593 | 0.276 | 0.899 | 42.206 | 0.814 | 0.776 |
| Observations | 408 | 408 | 408 | 410 | 410 | 410 | 410 | 410 | 410 | 408 | 408 |

Notes: Table A12 presents treatment effects by local cohesion within the party. Local cohesion is measured in the post-election survey using the question: "How strong the cohesion in your local party chapter". Answers were scaled from 0 (very weak) to 6 (very strong). Individual responses were then collapsed at the level of the first three digits of the zip-code and standardized. The data was then merged to the experimental survey. Sample is restricted to respondents who downloaded the application for whom we observe their location as recorded during the sign up for the application. Cohesion data is missing for some localities with no observations in the post-election survey. Outcomes and pre-specified controls are as defined in Table 1. * $p < 0.10$, ** $p < 0.05$, *** $p < 0.01$

Table A13: Treatment effects by application download

| | Posterior | Intentions | | App Data | | | App Data: Week 7/8 | | | Index | |
|---------------------------------|--------------------|-------------------|---------------------|-------------------|-------------------|---------------------|--------------------|--------------------|--------------------|---------------------|---------------------|
| | Belief | Any | Days | Any | Days | Doors | Any | Days | Doors | Overall | Week 7/8 |
| Panel A: No app download | | | | | | | | | | | |
| Treatment | 0.899 (0.721) | -0.020 (0.028) | -0.832** (0.396) | -0.004 (0.010) | -0.130 (0.080) | -7.569** (3.857) | -0.014* (0.008) | -0.079* (0.042) | -2.742* (1.424) | -0.071** (0.034) | -0.086** (0.036) |
| Control mean | 16.013 | 0.376 | 3.060 | 0.027 | 0.182 | 9.260 | 0.025 | 0.098 | 3.488 | -0.298 | -0.250 |
| Observations | 1016 | 1014 | 1014 | 1028 | 1028 | 1028 | 1028 | 1028 | 1028 | 1014 | 1014 |
| Panel B: App download | | | | | | | | | | | |
| Treatment | 2.370** (1.035) | 0.002 (0.040) | -1.619* (0.855) | -0.027 (0.047) | -0.090 (0.449) | -24.137 (23.182) | -0.038 (0.042) | -0.188 (0.164) | -12.049 (8.089) | -0.139 (0.125) | -0.201 (0.126) |
| Control mean | 16.112 | 0.809 | 8.146 | 0.422 | 2.017 | 111.078 | 0.261 | 0.744 | 37.294 | 0.800 | 0.712 |
| Observations | 381 | 381 | 381 | 383 | 383 | 383 | 383 | 383 | 383 | 381 | 381 |

Notes: Table A13 presents treatment effects by whether respondents had downloaded the application prior to the experiment. Panel A contains the sample of supporters who had not downloaded the application before the treatment, Panel B contains the sample of supporters who had downloaded the application before the treatment. Outcomes and pre-specified controls are as defined in Table 1. * $p < 0.10$, ** $p < 0.05$, *** $p < 0.01$

Results for underestimators

Table A14: Main effects (underestimators)

| | Belief | Intentions | | App Data | | | App Data: Week 7/8 | | | Index | |
|--|----------------------|---------------------|----------------------|-------------------|-------------------|----------------------|---------------------|---------------------|---------------------|----------------------|----------------------|
| | % canvassing | Any | Days | Any | Days | Doors | Any | Days | Doors | Overall | Week 7/8 |
| Panel A: Pooled treatment effects | | | | | | | | | | | |
| Treatment | 5.027*** (0.543) | 0.002 (0.026) | -1.098*** (0.361) | -0.013 (0.016) | -0.159 (0.159) | -14.388* (7.839) | -0.027* (0.014) | -0.145** (0.064) | -6.657** (2.814) | -0.093*** (0.047) | -0.132*** (0.049) |
| Panel B: Interaction with strength of connection to the party | | | | | | | | | | | |
| Treatment | 4.959*** (0.556) | 0.007 (0.026) | -1.113*** (0.366) | -0.013 (0.016) | -0.174 (0.158) | -15.822** (7.968) | -0.028** (0.014) | -0.152** (0.064) | -7.118** (2.843) | -0.096*** (0.048) | -0.137*** (0.049) |
| Treatment × Strength of connection to party (PCA) | 0.868 (0.665) | 0.031 (0.027) | 0.803** (0.364) | 0.001 (0.013) | 0.134 (0.150) | 16.294** (6.933) | 0.021* (0.011) | 0.057 (0.066) | 5.239** (2.317) | 0.089** (0.044) | 0.104** (0.045) |
| Strength of connection to party (PCA) | -2.409*** (0.586) | 0.073*** (0.021) | -0.115 (0.351) | 0.014 (0.011) | -0.023 (0.153) | -8.100 (7.076) | -0.000 (0.011) | 0.008 (0.070) | -2.023 (2.362) | 0.030 (0.042) | 0.028 (0.044) |
| Control mean | 9.083 | 0.473 | 4.028 | 0.123 | 0.701 | 38.348 | 0.084 | 0.297 | 13.318 | -0.029 | -0.010 |
| Observations | 1150 | 1148 | 1148 | 1163 | 1163 | 1163 | 1163 | 1163 | 1163 | 1148 | 1148 |

Notes: Table A14 presents treatment effects for respondents who underestimate the share of fellow party members who plan to participate in the party's door-to-door canvassing campaign. Panel A displays the pooled treatment effects. Panel B presents treatment effects interacted with a summary measure of connectedness to the party. Outcomes and pre-specified controls are as defined in Table 1. * $p < 0.10$, ** $p < 0.05$, *** $p < 0.01$

Table A15: Treatment effects on application download (underestimators)

| | Survey | App Data | | |
|--------------------|-------------------|------------------|-------------------|-----------------------|
| | click on app-link | within 24h | within one week | any time after survey |
| Treatment | -0.006 (0.012) | 0.005 (0.008) | -0.005 (0.009) | 0.010 (0.014) |
| Observations | 1163 | 1163 | 1163 | 1163 |
| Control group mean | 0.04 | 0.02 | 0.03 | 0.05 |

Notes: Table A15 presents treatment effects on application download for respondents who underestimate the share of fellow party members who plan to participate in the party's door-to-door canvassing campaign. Pre-specified controls are as defined in Table 1. * $p < 0.10$, ** $p < 0.05$, *** $p < 0.01$

Table A16: Treatment effects by canvassing experience (underestimators)

| | Posterior | Intentions | | App Data | | | App Data: Week 7/8 | | | Index | |
|--|---------------------|-------------------|----------------------|-------------------|--------------------|-----------------------|---------------------|----------------------|-----------------------|---------------------|----------------------|
| | Belief | Any | Days | Any | Days | Doors | Any | Days | Doors | Overall | Week 7/8 |
| Panel A: Inexperienced supporters | | | | | | | | | | | |
| Treatment | 4.566*** (0.738) | -0.014 (0.032) | -1.356*** (0.447) | -0.010 (0.018) | -0.295* (0.171) | -25.112*** (9.638) | -0.040** (0.016) | -0.205*** (0.077) | -11.075*** (3.474) | -0.142** (0.056) | -0.199*** (0.058) |
| Control mean | 9.872 | 0.376 | 3.382 | 0.101 | 0.657 | 39.110 | 0.081 | 0.300 | 14.187 | -0.126 | -0.085 |
| Observations | 701 | 700 | 700 | 710 | 710 | 710 | 710 | 710 | 710 | 700 | 700 |
| Panel B: Experienced supporters | | | | | | | | | | | |
| Treatment | 5.675*** (0.785) | 0.025 (0.042) | -0.722 (0.608) | -0.015 (0.028) | 0.088 (0.323) | 3.527 (13.850) | -0.003 (0.025) | -0.045 (0.114) | 0.780 (4.884) | -0.012 (0.086) | -0.024 (0.085) |
| Control mean | 7.850 | 0.626 | 5.041 | 0.158 | 0.770 | 37.158 | 0.090 | 0.293 | 11.959 | 0.122 | 0.107 |
| Observations | 449 | 448 | 448 | 453 | 453 | 453 | 453 | 453 | 453 | 448 | 448 |

Notes: Table A16 presents treatment effects for respondents who underestimate the share of fellow party members who plan to participate in the party's door-to-door canvassing campaign. Panel A contains the sample of respondents without prior canvassing experience, Panel B contains the sample of respondents with prior canvassing experience. Outcomes and pre-specified controls are as defined in Table 1. * $p < 0.10$, ** $p < 0.05$, *** $p < 0.01$

Table A17: Treatment effects by party membership (underestimators)

| | Posterior | Intentions | | App Data | | | App Data: Week 7/8 | | | Index | |
|---------------------------------|---------------------|------------------|---------------------|-------------------|-------------------|----------------------|--------------------|--------------------|---------------------|--------------------|---------------------|
| | Belief | Any | Days | Any | Days | Doors | Any | Days | Doors | Overall | Week 7/8 |
| Panel A: No party member | | | | | | | | | | | |
| Treatment | 2.590 (2.096) | 0.002 (0.064) | -2.420** (1.037) | -0.029 (0.026) | -0.506 (0.343) | -36.275* (20.542) | -0.039* (0.021) | -0.196 (0.156) | -10.681 (7.353) | -0.227* (0.116) | -0.222* (0.118) |
| Control mean | 13.012 | 0.367 | 4.266 | 0.061 | 0.573 | 41.854 | 0.049 | 0.183 | 9.976 | -0.129 | -0.134 |
| Observations | 168 | 167 | 167 | 172 | 172 | 172 | 172 | 172 | 172 | 167 | 167 |
| Panel B: Party member | | | | | | | | | | | |
| Treatment | 5.461*** (0.535) | 0.004 (0.028) | -0.857** (0.386) | -0.009 (0.018) | -0.104 (0.180) | -10.520 (8.608) | -0.025 (0.016) | -0.142* (0.073) | -6.193** (3.135) | -0.069 (0.053) | -0.118** (0.054) |
| Control mean | 10.623 | 0.475 | 4.311 | 0.113 | 0.621 | 47.782 | 0.073 | 0.258 | 12.597 | -0.016 | -0.022 |
| Observations | 982 | 981 | 981 | 991 | 991 | 991 | 991 | 991 | 991 | 981 | 981 |

Notes: Table A17 presents treatment effects for respondents who underestimate the share of fellow party members who plan to participate in the party's door-to-door canvassing campaign. Panel A contains the sample of non-party members, Panel B contains the sample of party members. Outcomes and pre-specified controls are as defined in Table 1. * $p < 0.10$, ** $p < 0.05$, *** $p < 0.01$

Table A18: Treatment effects by party membership duration (underestimators)

| | Posterior | Intentions | | App Data | | | App Data: Week 7/8 | | | Index | |
|--|---------------------|-------------------|----------------------|-------------------|-------------------|----------------------|---------------------|---------------------|----------------------|---------------------|----------------------|
| | Belief | Any | Days | Any | Days | Doors | Any | Days | Doors | Overall | Week 7/8 |
| Panel A: Below med. membership dur. | | | | | | | | | | | |
| Treatment | 4.833*** (0.831) | -0.029 (0.037) | -1.726*** (0.563) | -0.011 (0.024) | -0.193 (0.236) | -23.635* (13.268) | -0.049** (0.022) | -0.211** (0.091) | -10.394** (4.430) | -0.150** (0.073) | -0.226*** (0.073) |
| Control mean | 9.963 | 0.515 | 4.677 | 0.144 | 0.830 | 52.609 | 0.111 | 0.362 | 17.107 | 0.074 | 0.097 |
| Observations | 547 | 546 | 546 | 554 | 554 | 554 | 554 | 554 | 554 | 546 | 546 |
| Panel B: Above med. membership dur. | | | | | | | | | | | |
| Treatment | 5.293*** (0.700) | 0.035 (0.036) | -0.494 (0.459) | -0.015 (0.021) | -0.133 (0.213) | -7.027 (8.914) | -0.008 (0.018) | -0.091 (0.093) | -3.598 (3.692) | -0.039 (0.061) | -0.047 (0.065) |
| Control mean | 8.293 | 0.436 | 3.446 | 0.104 | 0.584 | 25.379 | 0.060 | 0.238 | 9.872 | -0.122 | -0.106 |
| Observations | 603 | 602 | 602 | 609 | 609 | 609 | 609 | 609 | 609 | 602 | 602 |

Notes: Table A18 presents treatment effects for respondents who underestimate the share of fellow party members who plan to participate in the party's door-to-door canvassing campaign. Panel A contains the sample of supporters that have a below median party membership duration (including non-members), Panel B contains the sample of supporters who have above median membership duration. Outcomes and pre-specified controls are as defined in Table 1. * $p < 0.10$, ** $p < 0.05$, *** $p < 0.01$

Table A19: Treatment effects by application download (underestimators)

| | Posterior | Intentions | | App Data | | | App Data: Week 7/8 | | | Index | |
|---------------------------------|---------------------|-------------------|---------------------|-------------------|-------------------|---------------------|--------------------|--------------------|--------------------|--------------------|---------------------|
| | Belief | Any | Days | Any | Days | Doors | Any | Days | Doors | Overall | Week 7/8 |
| Panel A: No app download | | | | | | | | | | | |
| Treatment | 4.341*** (0.664) | -0.001 (0.031) | -0.813** (0.404) | -0.003 (0.011) | -0.144 (0.093) | -8.556* (4.536) | -0.015 (0.009) | -0.091* (0.049) | -3.218* (1.696) | -0.062* (0.038) | -0.081** (0.040) |
| Control mean | 9.438 | 0.366 | 2.908 | 0.026 | 0.206 | 10.848 | 0.026 | 0.114 | 4.241 | -0.304 | -0.252 |
| Observations | 844 | 842 | 842 | 855 | 855 | 855 | 855 | 855 | 855 | 842 | 842 |
| Panel B: App download | | | | | | | | | | | |
| Treatment | 6.816*** (0.839) | 0.000 (0.045) | -1.985** (0.786) | -0.037 (0.051) | -0.119 (0.531) | -26.455 (26.353) | -0.057 (0.045) | -0.259 (0.193) | -13.605 (9.169) | -0.168 (0.142) | -0.259* (0.142) |
| Control mean | 8.000 | 0.799 | 7.439 | 0.418 | 2.206 | 121.823 | 0.262 | 0.851 | 40.872 | 0.808 | 0.727 |
| Observations | 306 | 306 | 306 | 308 | 308 | 308 | 308 | 308 | 308 | 306 | 306 |

Notes: Table A19 presents treatment effects for respondents who underestimate the share of fellow party members who plan to participate in the party's door-to-door canvassing campaign. Panel A contains the sample of supporters who had not downloaded the application before the treatment, Panel B contains the sample of supporters who had downloaded the application before the treatment. Outcomes and pre-specified controls are as defined in Table 1. * $p < 0.10$, ** $p < 0.05$, *** $p < 0.01$

Results for overestimators

Table A20: Main effects (overestimators)

| | Belief | Intentions | | App Data | | | App Data: Week 7/8 | | | Index | |
|--|-----------------------|---------------------|-------------------|-------------------|-------------------|--------------------|--------------------|-------------------|-------------------|-------------------|-------------------|
| | % canvassing | Any | Days | Any | Days | Doors | Any | Days | Doors | Overall | Week 7/8 |
| Panel A: Pooled treatment effects | | | | | | | | | | | |
| Treatment | -16.686*** (1.973) | -0.081 (0.053) | -0.926 (1.227) | -0.029 (0.038) | -0.097 (0.186) | -9.009 (12.265) | -0.012 (0.034) | 0.003 (0.055) | -2.561 (4.030) | -0.125 (0.086) | -0.100 (0.084) |
| Panel B: Interaction with strength of connection to the party | | | | | | | | | | | |
| Treatment | -14.869*** (1.869) | -0.080 (0.057) | 0.032 (1.475) | -0.017 (0.038) | 0.002 (0.235) | -1.749 (12.729) | -0.002 (0.034) | 0.026 (0.068) | -0.551 (4.197) | -0.058 (0.100) | -0.041 (0.096) |
| Treatment × Strength of connection to party (PCA) | 5.901*** (2.136) | -0.020 (0.054) | 2.244 (1.486) | 0.024 (0.035) | 0.234 (0.230) | 13.941 (12.904) | 0.007 (0.034) | 0.035 (0.066) | 3.857 (3.485) | 0.136 (0.099) | 0.102 (0.094) |
| Strength of connection to party (PCA) | -5.039*** (1.927) | 0.118*** (0.041) | -0.238 (0.935) | -0.024 (0.024) | -0.056 (0.098) | -11.904 (8.440) | -0.018 (0.023) | -0.009 (0.033) | -2.878 (2.305) | 0.010 (0.058) | 0.023 (0.058) |
| Control mean | 45.313 | 0.545 | 5.754 | 0.149 | 0.440 | 22.515 | 0.090 | 0.119 | 7.157 | 0.034 | 0.021 |
| Observations | 247 | 247 | 247 | 248 | 248 | 248 | 248 | 248 | 248 | 247 | 247 |

Notes: Table A20 presents treatment effects for respondents who overestimate the share of fellow party members who plan to participate in the party's door-to-door canvassing campaign. Panel A displays the pooled treatment effects. Panel B presents treatment effects interacted with a summary measure of connectedness to the party. Outcomes and pre-specified controls are as defined in Table 1. * $p < 0.10$, ** $p < 0.05$, *** $p < 0.01$

Table A21: Treatment effects on application download (overestimators)

| | Survey | App Data | | |
|--------------------|-------------------|------------------|------------------|-----------------------|
| | click on app-link | within 24h | within one week | any time after survey |
| Treatment | -0.003 (0.029) | 0.014 (0.025) | 0.009 (0.026) | -0.021 (0.033) |
| Observations | 248 | 248 | 248 | 248 |
| Control group mean | 0.06 | 0.03 | 0.04 | 0.08 |

Notes: Table A21 presents treatment effects on application download for respondents who overestimate the share of fellow party members who plan to participate in the party's door-to-door canvassing campaign. Pre-specified controls are as defined in Table 1. * $p < 0.10$, ** $p < 0.05$, *** $p < 0.01$

Table A22: Treatment effects by canvassing experience (overestimators)

| | Posterior | Intentions | | App Data | | | App Data: Week 7/8 | | | Index | |
|--|-----------------------|-------------------|-------------------|-------------------|-------------------|--------------------|--------------------|-------------------|-------------------|--------------------|--------------------|
| | Belief | Any | Days | Any | Days | Doors | Any | Days | Doors | Overall | Week 7/8 |
| Panel A: Inexperienced supporters | | | | | | | | | | | |
| Treatment | -18.640*** (2.439) | -0.059 (0.064) | -1.435 (1.170) | -0.054 (0.045) | -0.182 (0.129) | -8.344 (9.971) | -0.044 (0.039) | -0.064 (0.048) | -5.094 (4.500) | -0.159* (0.091) | -0.164* (0.096) |
| Control mean | 46.211 | 0.442 | 5.084 | 0.137 | 0.326 | 15.895 | 0.084 | 0.105 | 6.737 | -0.079 | -0.069 |
| Observations | 168 | 168 | 168 | 168 | 168 | 168 | 168 | 168 | 168 | 168 | 168 |
| Panel B: Experienced supporters | | | | | | | | | | | |
| Treatment | -12.179*** (3.111) | -0.101 (0.099) | -0.384 (2.696) | 0.034 (0.062) | 0.310 (0.584) | -1.601 (38.897) | 0.049 (0.065) | 0.168 (0.158) | 3.191 (10.280) | -0.010 (0.196) | 0.036 (0.174) |
| Control mean | 43.128 | 0.795 | 7.385 | 0.179 | 0.718 | 38.641 | 0.103 | 0.154 | 8.179 | 0.309 | 0.240 |
| Observations | 79 | 79 | 79 | 80 | 80 | 80 | 80 | 80 | 80 | 79 | 79 |

Notes: Table A22 presents treatment effects for respondents who overestimate the share of fellow party members who plan to participate in the party's door-to-door canvassing campaign. Panel A contains the sample of respondents without prior canvassing experience, Panel B contains the sample of respondents with prior canvassing experience. Outcomes and pre-specified controls are as defined in Table 1. * $p < 0.10$, ** $p < 0.05$, *** $p < 0.01$

Table A23: Treatment effects by party membership (overestimators)

| | Posterior | Intentions | | App Data | | | App Data: Week 7/8 | | | Index | |
|---------------------------------|-----------------------|-------------------|---------------------|-------------------|-------------------|---------------------|--------------------|------------------|-------------------|--------------------|-------------------|
| | Belief | Any | Days | Any | Days | Doors | Any | Days | Doors | Overall | Week 7/8 |
| Panel A: No party member | | | | | | | | | | | |
| Treatment | -24.088*** (4.891) | -0.123 (0.121) | -4.222** (1.998) | -0.022 (0.076) | -0.101 (0.211) | -11.433 (21.474) | 0.024 (0.077) | 0.031 (0.084) | -1.727 (5.324) | -0.266* (0.148) | -0.196 (0.152) |
| Control mean | 49.556 | 0.528 | 7.722 | 0.194 | 0.500 | 45.111 | 0.111 | 0.111 | 11.250 | 0.177 | 0.120 |
| Observations | 73 | 73 | 73 | 73 | 73 | 73 | 73 | 73 | 73 | 73 | 73 |
| Panel B: Party member | | | | | | | | | | | |
| Treatment | -13.650*** (2.034) | -0.075 (0.065) | 0.880 (1.872) | -0.000 (0.048) | 0.101 (0.313) | 6.505 (15.453) | -0.026 (0.041) | 0.002 (0.088) | 0.706 (5.200) | 0.014 (0.122) | -0.030 (0.117) |
| Control mean | 47.708 | 0.458 | 5.729 | 0.083 | 0.188 | 13.083 | 0.062 | 0.104 | 8.688 | -0.107 | -0.049 |
| Observations | 174 | 174 | 174 | 175 | 175 | 175 | 175 | 175 | 175 | 174 | 174 |

Notes: Table A23 presents treatment effects for respondents who overestimate the share of fellow party members who plan to participate in the party's door-to-door canvassing campaign. Panel A contains the sample of non-party members, Panel B contains the sample of party members. Outcomes and pre-specified controls are as defined in Table 1. * $p < 0.10$, ** $p < 0.05$, *** $p < 0.01$

Table A24: Treatment effects by party membership duration (overestimators)

| | Posterior | Intentions | | App Data | | | App Data: Week 7/8 | | | Index | |
|--|-----------------------|-------------------|-------------------|-------------------|-------------------|---------------------|--------------------|-------------------|-------------------|-------------------|-------------------|
| | Belief | Any | Days | Any | Days | Doors | Any | Days | Doors | Overall | Week 7/8 |
| Panel A: Below med. membership dur. | | | | | | | | | | | |
| Treatment | -19.903*** (2.573) | -0.097 (0.068) | -1.123 (1.354) | -0.017 (0.051) | -0.227 (0.223) | -17.929 (15.923) | -0.023 (0.046) | 0.006 (0.056) | -2.429 (3.853) | -0.159 (0.103) | -0.123 (0.096) |
| Control mean | 46.333 | 0.580 | 6.099 | 0.173 | 0.531 | 28.358 | 0.111 | 0.111 | 5.852 | 0.103 | 0.065 |
| Observations | 158 | 158 | 158 | 159 | 159 | 159 | 159 | 159 | 159 | 158 | 158 |
| Panel B: Above med. membership dur. | | | | | | | | | | | |
| Treatment | -10.353*** (3.002) | -0.042 (0.099) | 0.776 (2.739) | -0.033 (0.055) | 0.000 (0.236) | 2.460 (9.736) | 0.010 (0.049) | -0.020 (0.089) | -1.192 (5.559) | -0.016 (0.158) | 0.004 (0.156) |
| Control mean | 43.755 | 0.491 | 5.226 | 0.113 | 0.302 | 13.585 | 0.057 | 0.132 | 9.151 | -0.072 | -0.046 |
| Observations | 89 | 89 | 89 | 89 | 89 | 89 | 89 | 89 | 89 | 89 | 89 |

Notes: Table A24 presents treatment effects for respondents who overestimate the share of fellow party members who plan to participate in the party's door-to-door canvassing campaign. Panel A contains the sample of supporters that have a below median party membership duration (including non-members), Panel B contains the sample of supporters who have above median membership duration. Outcomes and pre-specified controls are as defined in Table 1. * $p < 0.10$, ** $p < 0.05$, *** $p < 0.01$

Table A25: Treatment effects by application download (overestimators)

| | Posterior | Intentions | | App Data | | | App Data: Week 7/8 | | | Index | |
|---------------------------------|-----------------------|-------------------|-------------------|-------------------|-------------------|---------------------|--------------------|-------------------|---------------------|-------------------|-------------------|
| | Belief | Any | Days | Any | Days | Doors | Any | Days | Doors | Overall | Week 7/8 |
| Panel A: No app download | | | | | | | | | | | |
| Treatment | -16.408*** (2.350) | -0.111 (0.069) | -1.019 (1.295) | -0.006 (0.032) | -0.022 (0.067) | -1.429 (2.086) | -0.005 (0.022) | -0.005 (0.022) | 0.198 (0.312) | -0.106 (0.082) | -0.101 (0.076) |
| Control mean | 45.432 | 0.421 | 3.737 | 0.032 | 0.074 | 2.105 | 0.021 | 0.021 | 0.095 | -0.270 | -0.240 |
| Observations | 172 | 172 | 172 | 173 | 173 | 173 | 173 | 173 | 173 | 172 | 172 |
| Panel B: App download | | | | | | | | | | | |
| Treatment | -15.388*** (3.552) | 0.011 (0.088) | 0.438 (3.329) | -0.032 (0.112) | -0.250 (0.604) | -22.830 (39.036) | 0.001 (0.104) | 0.025 (0.184) | -10.017 (16.135) | -0.069 (0.247) | -0.020 (0.256) |
| Control mean | 45.026 | 0.846 | 10.667 | 0.436 | 1.333 | 72.231 | 0.256 | 0.359 | 24.359 | 0.775 | 0.658 |
| Observations | 75 | 75 | 75 | 75 | 75 | 75 | 75 | 75 | 75 | 75 | 75 |

Notes: Table A25 presents treatment effects for respondents who overestimate the share of fellow party members who plan to participate in the party's door-to-door canvassing campaign. Panel A contains the sample of supporters who had not downloaded the application before the treatment, Panel B contains the sample of supporters who had downloaded the application before the treatment. Outcomes and pre-specified controls are as defined in Table 1. * $p < 0.10$, ** $p < 0.05$, *** $p < 0.01$

Results without pre-specified controls

Table A26: Main effects (no control)

| | Belief | Intentions | | App Data | | | App Data: Week 7/8 | | | Index | |
|--|----------------------|---------------------|----------------------|-------------------|-------------------|----------------------|--------------------|---------------------|---------------------|---------------------|----------------------|
| | % canvassing | Any | Days | Any | Days | Doors | Any | Days | Doors | Overall | Week 7/8 |
| Panel A: Pooled treatment effects | | | | | | | | | | | |
| Treatment | 1.238** (0.607) | -0.012 (0.023) | -1.040*** (0.368) | -0.015 (0.015) | -0.146 (0.136) | -13.393* (6.899) | -0.024* (0.013) | -0.120** (0.055) | -5.992** (2.448) | -0.097** (0.042) | -0.126*** (0.043) |
| Panel B: Interaction with strength of connection to the party | | | | | | | | | | | |
| Treatment | 1.238** (0.599) | -0.007 (0.024) | -1.005*** (0.368) | -0.015 (0.015) | -0.148 (0.136) | -13.452* (6.908) | -0.024* (0.013) | -0.121** (0.055) | -6.046** (2.458) | -0.094** (0.042) | -0.122*** (0.043) |
| Treatment × Strength of connection to party (PCA) | 3.064*** (0.713) | 0.028 (0.023) | 1.013*** (0.376) | 0.006 (0.012) | 0.140 (0.127) | 15.264*** (5.905) | 0.017 (0.011) | 0.041 (0.055) | 4.509** (1.926) | 0.098** (0.039) | 0.099** (0.040) |
| Strength of connection to party (PCA) | -3.635*** (0.640) | 0.079*** (0.018) | -0.085 (0.331) | 0.005 (0.010) | -0.027 (0.124) | -8.901 (5.816) | -0.004 (0.010) | 0.009 (0.056) | -2.015 (1.919) | 0.026 (0.035) | 0.029 (0.037) |
| Control mean | 16.039 | 0.487 | 4.361 | 0.128 | 0.651 | 35.330 | 0.085 | 0.263 | 12.144 | -0.017 | -0.004 |
| Observations | 1397 | 1395 | 1395 | 1411 | 1411 | 1411 | 1411 | 1411 | 1411 | 1395 | 1395 |

Notes: Table A26 presents main treatment effects. Panel A displays the pooled treatment effects. Panel B presents treatment effects interacted with a summary measure of connectedness to the party. The measure for strength of connection to the party is the first principal component of three pre-specified dimensions of heterogeneity (previous canvassing experience, party membership and party membership duration). This summary measure is standardized to have mean zero and standard deviation one. Outcomes are as defined in Table 1. * $p < 0.10$, ** $p < 0.05$, *** $p < 0.01$

Table A27: Treatment effects on application download (no controls)

| | Survey | App Data | | |
|--------------------|-------------------|------------------|-------------------|-----------------------|
| | click on app-link | within 24h | within one week | any time after survey |
| Treatment | -0.009 (0.011) | 0.004 (0.008) | -0.006 (0.009) | 0.009 (0.014) |
| Observations | 1163 | 1163 | 1163 | 1163 |
| Control group mean | 0.04 | 0.02 | 0.03 | 0.05 |

Notes: Table A27 presents treatment effects on application download without pre-specified controls. * $p < 0.10$, ** $p < 0.05$, *** $p < 0.01$

Table A28: Treatment effects by canvassing experience (no controls)

| | Posterior | Intentions | | App Data | | | App Data: Week 7/8 | | | Index | |
|--|--------------------|-------------------|----------------------|-------------------|-------------------|----------------------|---------------------|---------------------|----------------------|--------------------|----------------------|
| | Belief | Any | Days | Any | Days | Doors | Any | Days | Doors | Overall | Week 7/8 |
| Panel A: Inexperienced supporters | | | | | | | | | | | |
| Treatment | -1.029 (1.070) | -0.007 (0.033) | -1.293*** (0.465) | -0.005 (0.021) | -0.221 (0.155) | -19.446** (8.548) | -0.033** (0.017) | -0.157** (0.066) | -9.297*** (3.078) | -0.111* (0.060) | -0.164*** (0.059) |
| Control mean | 17.736 | 0.390 | 3.751 | 0.109 | 0.586 | 34.120 | 0.081 | 0.258 | 12.586 | -0.116 | -0.081 |
| Observations | 869 | 868 | 868 | 878 | 878 | 878 | 878 | 878 | 878 | 868 | 868 |
| Panel B: Experienced supporters | | | | | | | | | | | |
| Treatment | 2.756** (1.215) | 0.003 (0.042) | -0.652 (0.686) | -0.014 (0.031) | 0.028 (0.282) | -0.611 (13.232) | 0.004 (0.025) | -0.033 (0.100) | 0.252 (4.370) | -0.031 (0.089) | -0.025 (0.083) |
| Control mean | 13.162 | 0.651 | 5.395 | 0.161 | 0.762 | 37.379 | 0.092 | 0.272 | 11.395 | 0.150 | 0.127 |
| Observations | 528 | 527 | 527 | 533 | 533 | 533 | 533 | 533 | 533 | 527 | 527 |

Notes: Table A28 presents treatment effects without pre-specified controls. Panel A contains the sample of supporters without previous canvassing experience, Panel B contains the sample of supporters with previous canvassing experience. Outcomes are as defined in Table 1. * $p < 0.10$, ** $p < 0.05$, *** $p < 0.01$

Table A29: Treatment effects by party membership (no controls)

| | Posterior | Intentions | | App Data | | | App Data: Week 7/8 | | | Index | |
|---------------------------------|---------------------|-------------------|----------------------|-------------------|--------------------|-----------------------|--------------------|--------------------|--------------------|----------------------|---------------------|
| | Belief | Any | Days | Any | Days | Doors | Any | Days | Doors | Overall | Week 7/8 |
| Panel A: No party member | | | | | | | | | | | |
| Treatment | -5.385** (2.536) | -0.057 (0.063) | -3.332*** (0.948) | -0.047 (0.035) | -0.409* (0.230) | -35.186** (17.384) | -0.021 (0.030) | -0.098 (0.095) | -8.223* (4.915) | -0.296*** (0.111) | -0.235** (0.103) |
| Control mean | 24.353 | 0.417 | 5.348 | 0.102 | 0.551 | 42.847 | 0.068 | 0.161 | 10.364 | -0.033 | -0.054 |
| Observations | 241 | 240 | 240 | 245 | 245 | 245 | 245 | 245 | 245 | 240 | 240 |
| Panel B: Party member | | | | | | | | | | | |
| Treatment | 1.464* (0.818) | 0.015 (0.029) | -0.540 (0.431) | 0.001 (0.020) | -0.059 (0.168) | -7.263 (8.117) | -0.018 (0.016) | -0.110* (0.064) | -5.050* (2.897) | -0.029 (0.057) | -0.078 (0.055) |
| Control mean | 21.094 | 0.471 | 4.712 | 0.105 | 0.500 | 38.099 | 0.070 | 0.215 | 11.506 | -0.041 | -0.030 |
| Observations | 1156 | 1155 | 1155 | 1166 | 1166 | 1166 | 1166 | 1166 | 1166 | 1155 | 1155 |

Notes: Table A29 presents treatment effects without pre-specified controls. Panel A contains the sample of non-party members, Panel B contains the sample of party members. Outcomes are as defined in Table 1. * $p < 0.10$, ** $p < 0.05$, *** $p < 0.01$

Table A30: Treatment effects by party membership duration (no controls)

| | Posterior | Intentions | | App Data | | | App Data: Week 7/8 | | | Index | |
|--|-------------------|-------------------|----------------------|-------------------|-------------------|---------------------|--------------------|--------------------|---------------------|-------------------|---------------------|
| | Belief | Any | Days | Any | Days | Doors | Any | Days | Doors | Overall | Week 7/8 |
| Panel A: Below med. membership dur. | | | | | | | | | | | |
| Treatment | -1.103 (1.232) | -0.029 (0.038) | -1.594*** (0.565) | 0.002 (0.027) | -0.130 (0.213) | -18.264 (12.165) | -0.033 (0.022) | -0.138* (0.077) | -7.531** (3.761) | -0.119 (0.078) | -0.175** (0.072) |
| Control mean | 18.428 | 0.530 | 5.009 | 0.151 | 0.761 | 47.028 | 0.111 | 0.304 | 14.517 | 0.081 | 0.089 |
| Observations | 705 | 704 | 704 | 713 | 713 | 713 | 713 | 713 | 713 | 704 | 704 |
| Panel B: Above med. membership dur. | | | | | | | | | | | |
| Treatment | 1.779* (1.053) | 0.030 (0.038) | -0.459 (0.543) | -0.019 (0.022) | -0.121 (0.193) | -6.264 (8.055) | -0.005 (0.018) | -0.081 (0.081) | -3.769 (3.410) | -0.037 (0.065) | -0.042 (0.066) |
| Control mean | 13.663 | 0.444 | 3.716 | 0.105 | 0.541 | 23.598 | 0.060 | 0.222 | 9.764 | -0.115 | -0.097 |
| Observations | 692 | 691 | 691 | 698 | 698 | 698 | 698 | 698 | 698 | 691 | 691 |

Notes: Table A30 presents treatment effects without pre-specified controls. Panel A contains the sample of supporters who have a below median party membership duration (including non-members), Panel B contains the sample of supporters who have above median membership duration. Outcomes are as defined in Table 1.
 * $p < 0.10$, ** $p < 0.05$, *** $p < 0.01$

Table A31: Treatment effects by application download (no controls)

| | Posterior | Intentions | | App Data | | | App Data: Week 7/8 | | | Index | |
|---------------------------------|------------------|-------------------|----------------------|-------------------|-------------------|---------------------|--------------------|--------------------|----------------------|--------------------|---------------------|
| | Belief | Any | Days | Any | Days | Doors | Any | Days | Doors | Overall | Week 7/8 |
| Panel A: No app download | | | | | | | | | | | |
| Treatment | 0.035 (0.958) | -0.003 (0.030) | -0.699* (0.396) | -0.003 (0.010) | -0.120 (0.079) | -6.947* (3.745) | -0.013 (0.008) | -0.076* (0.041) | -2.492* (1.413) | -0.054 (0.035) | -0.069* (0.037) |
| Control mean | 16.013 | 0.376 | 3.060 | 0.027 | 0.182 | 9.260 | 0.025 | 0.098 | 3.488 | -0.298 | -0.250 |
| Observations | 1016 | 1014 | 1014 | 1028 | 1028 | 1028 | 1028 | 1028 | 1028 | 1014 | 1014 |
| Panel B: App download | | | | | | | | | | | |
| Treatment | 1.159 (1.557) | -0.041 (0.042) | -2.422*** (0.911) | -0.063 (0.050) | -0.327 (0.459) | -36.048 (24.108) | -0.059 (0.043) | -0.262 (0.168) | -17.102** (8.412) | -0.264* (0.136) | -0.315** (0.133) |
| Control mean | 16.112 | 0.809 | 8.146 | 0.422 | 2.017 | 111.078 | 0.261 | 0.744 | 37.294 | 0.800 | 0.712 |
| Observations | 381 | 381 | 381 | 383 | 383 | 383 | 383 | 383 | 383 | 381 | 381 |

Notes: Table A31 presents treatment effects without pre-specified controls. Panel A contains the sample of supporters who had not downloaded the application before the treatment, Panel B contains the sample of supporters who had downloaded the application before the treatment. Outcomes are as defined in Table 1. * $p < 0.10$, ** $p < 0.05$, *** $p < 0.01$

G Mechanism survey

G.1 Instructions

This section describes the vignette fielded in 2022 among potential political activists in our country of study.

- Think of the following hypothetical scenario: A federal election is coming up and political parties are organizing their canvassing activities.

You think about canvassing to support your favorite party.

Your favorite party sends you the results of a survey among party members. This survey shows that more members than you had previously thought plan to participate in the canvassing campaign.

- How would the results of this survey affect your decision to participate in the canvassing campaign?
 - I would rather participate more.
 - The results would not affect my decision.
 - I would rather participate less.
- Why would the results of the survey affect or not affect your decision? Please answer using whole sentences.

PAGEBREAK

- Why would the results of the survey affect or not affect your decision to participate in the canvassing campaign? Please select all relevant options.

If other party members canvass more than I thought

- then the task will be done by others and my own activity will be less useful for the party.
- this strengthens my feelings of belonging and identity with the party and hence my motivation to canvass.

- then I would think that my engagement would be received more positively by society at large.
- then I would be more motivated because other also do their part.
- then the canvassing would be more fun.
- then the usefulness of my canvassing activity for the party would be larger.
- then I would feel obliged to do my part for the party.
- then it would be more useful if I did other activities for the party.
- this doesn't influence my decision because I act out of conviction.
- this doesn't influence my decision because the opinion of other party members does not matter to me.

G.2 Coding scheme for open text questions

Table A32: Coding scheme for open text data on social motives

| Name | Explanation | Example from open text data |
|--------------------|--|--|
| Free-riding | Reducing effort because your own effort is not as needed anymore or because the return to individual canvassing declines. | "I assume that the impact my canvassing effort would decrease - every additional volunteer and every additional conversation would, in my opinion, have a lower impact than the previous." |
| Substitution | Reducing canvassing effort and increase effort on another campaign activity. | "I think it makes sense to try less popular campaign activities." |
| Enjoyment | Increasing canvassing because canvassing is more fun the more people participate. | "It would probably be the case that if more people participated, the mood would also be different; it would be a fun event." |
| Identity | Increasing canvassing because of an increased feeling of identity with or belonging to the party. | "This would probably strengthen my feeling of belonging to the group." |
| Increasing returns | Increasing canvassing because the (perceived) returns to canvassing increased. | "The survey results would motivate me, because I would now think that my effort counts now more than ever and we can really make a difference." |
| Social image | Increasing canvassing because i) canvassing is less stigmatized when more people canvass, or ii) not canvassing is more stigmatized by others. | "Because I would be under the impression that canvassing would be desired within the party and in all likelihood also in society more general." |
| Reciprocity | Increasing canvassing because others also do their part. | "Somewhat higher willingness [to canvass] to demonstrate solidarity." |
| Other motivation | Increase in canvassing due to a general increase in motivation. | "High levels of mobilization motivate me." |

Notes: Table A32 displays the coding scheme employed to code the open text responses. All responses were hand-coded by two researchers and any differences were reconciled through discussion. We pre-specified an additional category of social pressure which we merged into social image because of very low prevalence.

G.3 Comparing hand-coded and structured responses

Table A33: Validation of hand-coded responses

| | Enjoyment | Identity | Incr. returns | Social image | Reciprocity | Free-riding | Substitution |
|---|-----------|----------|---------------|--------------|-------------|-------------|--------------|
| % hand-coded who also chose structured option | 100.00 | 100.00 | 71.43 | 100.00 | 100.00 | 85.11 | 91.67 |
| Hand-coded mean | 0.040 | 0.060 | 0.047 | 0.013 | 0.007 | 0.313 | 0.080 |
| Structured mean | 0.293 | 0.320 | 0.087 | 0.160 | 0.213 | 0.360 | 0.360 |

Notes: Table A33 presents the relationship between hand-coded motives and structured responses for whole sample. The sample (N=150) was recruited through social media posts in groups of potential political activists.

G.4 Summary statistics

Table A34: Summary statistics mechanism survey

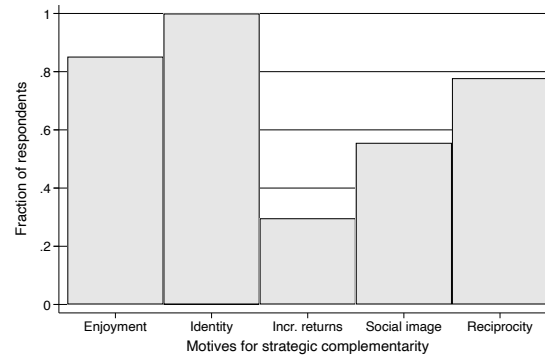
| | Mean | SD | Median | Min. | Max. | Obs. |
|--------------------------------|-------|------|--------|-------|-------|------|
| Male | 0.49 | 0.50 | 0.00 | 0.00 | 1.00 | 150 |
| Age | 30.03 | 9.65 | 27.00 | 18.00 | 74.00 | 150 |
| Party member: any | 0.35 | 0.48 | 0.00 | 0.00 | 1.00 | 150 |
| Years party member | 2.06 | 4.60 | 0.00 | 0.00 | 30.00 | 150 |
| Experience canvassing | 0.18 | 0.39 | 0.00 | 0.00 | 1.00 | 150 |
| Supporter: Collaborating party | 0.24 | 0.43 | 0.00 | 0.00 | 1.00 | 150 |

Notes: Table A34 presents summary statistics for the mechanism survey sample which was collected in March 2022. The sample (N=150) was recruited through social media posts in groups of potential political activists.

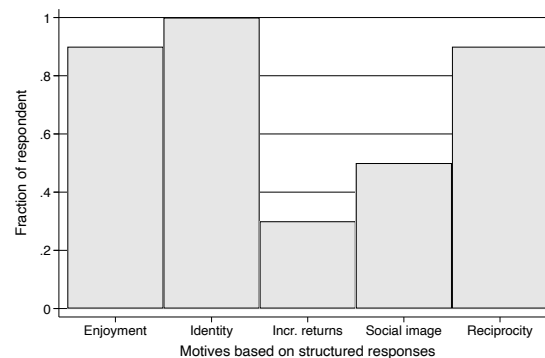
G.5 Additional mechanism results

Figure A7: Strategic interactions and stated motives (structured responses)

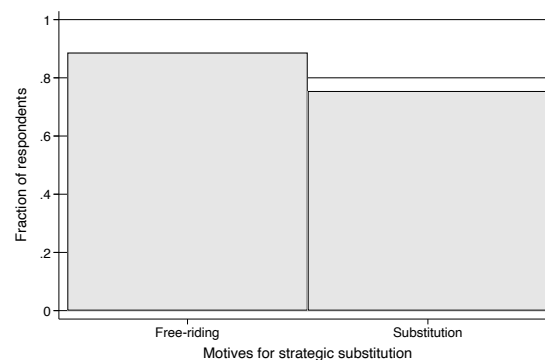
Panel A Motives among those with strategic complementarity



Panel B: Motives among those in "other motivation" category

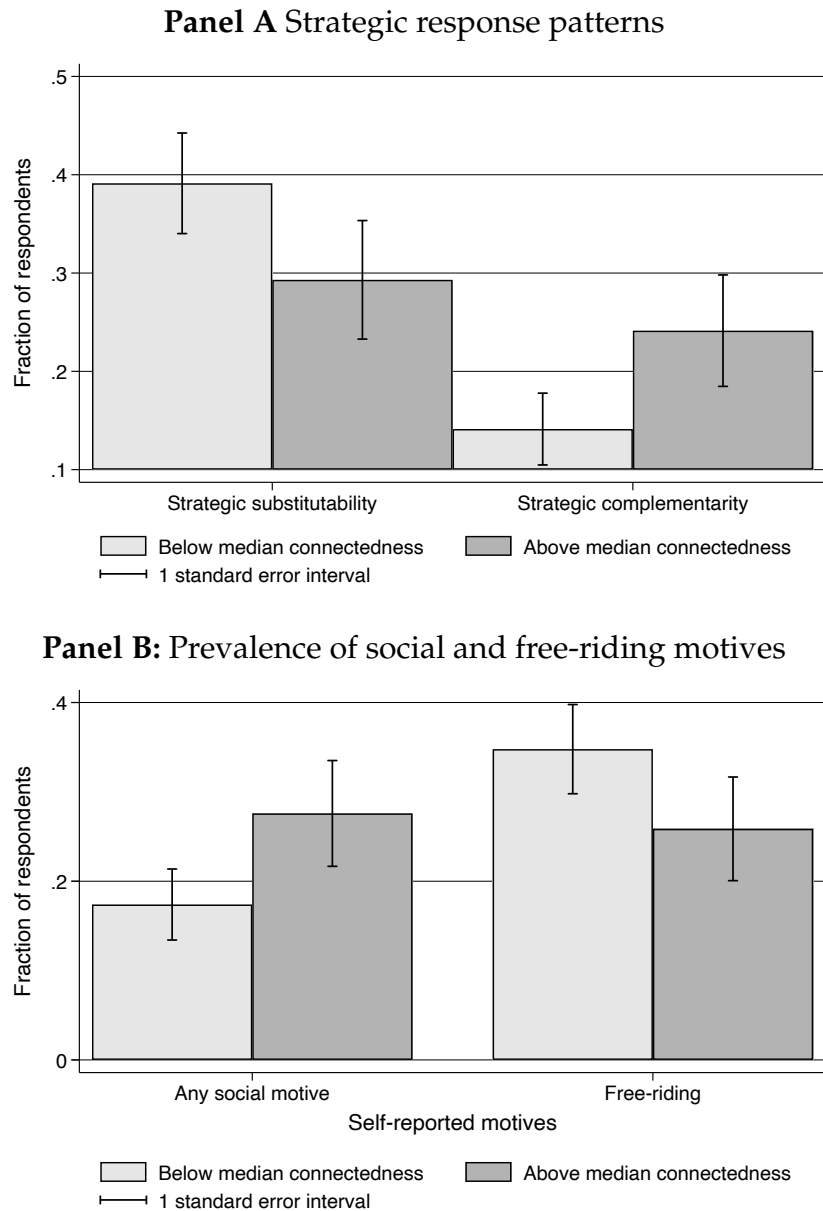


Panel C: Motives among those with strategic substitutability



Notes: Panel A of Figure A7 displays the motives for those respondents who exhibit strategic complementarity. Panel B of Figure A7 displays motives based on structured responses for those who were coded as "other motivation" in the open text response (see Figure 2 for details). Panel C of Figure A7 displays the motives for those respondents who exhibit strategic substitutability. Motives are measured using eight answer options (selecting multiple motives was possible). The sample (N=150) was recruited through social media posts in groups of potential political activists. Section G describes the vignette survey in detail.

Figure A8: Mechanism survey results by connectedness index



Notes: Panel A of Figure A8 displays the prevalence of strategic substitutability and strategic complementarity by the connectedness index among respondents to the mechanism survey. Panel B of Figure A8 displays the prevalence of social and free-riding motives by respondents' connectedness index. The connectedness index was constructed in parallel to the main experimental survey. The sample (N=150) was recruited through social media posts in groups of potential political activists. Section G describes the vignette survey in detail.

H Spillovers into Alternative Effort Domains

Do party supporters substitute their reduced canvassing effort with increased effort in alternative contribution domains? This question pertains to the cross-substitutability between different forms of political activism. Activists might shift their effort between different contribution domains and activities to maximize their impact. In this case, different forms of political activism exhibit cross-substitutability. Alternatively, activists might be constrained or unwilling to respond with increased effort in alternative activities, indicating that different forms of political activism exhibit no cross-substitutability. To investigate this question, we leverage unique data from the party's application regarding activity on social media. Specifically, we investigate whether respondents who learn that fellow supporters engage in more canvassing become more likely to share news stories pertaining to their party on Facebook through the application.

We find that respondents who learn that fellow supporters engage in more canvassing than previously believed do not respond with an increase in sharing of party news stories (Table A35). The data indicate that treated supporters show a close-to-zero decrease of 1.1%-points (*s.e.* = 1.4%) in their likelihood to share any news story as well as a decrease of 0.148 (*s.e.* = 0.22) in the average number of news stories shared. This evidence suggests that there is no cross-substitutability between supporters' canvassing behavior and their activity on social media pertaining to the party.

Table A35: Effects on effort in alternative domain: social media activity

| | Shared social media message | | |
|--------------|-----------------------------|-------------------|-------------------|
| | Any | Days | Total |
| Treatment | -0.010 (0.013) | -0.075 (0.110) | -0.198 (0.204) |
| Control mean | 0.075 | 0.404 | 0.808 |
| Observations | 1411 | 1411 | 1411 |

Notes: Table A35 presents treatment effects on social media activity. “*Any*” takes value one if the respondent shares any party news story on Facebook through the application. “*Days*” denotes the total number of days a respondent shares a party news story on Facebook through the application. “*Total*” is the total number of party news stories shared by the respondent on Facebook through the application. Pre-specified controls are as defined in Table 1. * $p < 0.10$, ** $p < 0.05$, *** $p < 0.01$